

ESSAYS ON APPLIED INTERNATIONAL MACROECONOMICS,
MONETARY POLICY, AND GLOBAL FINANCE

Inaugural-Dissertation
zur Erlangung des akademischen Grades eines Doktors
der Wirtschafts- und Sozialwissenschaften
der Wirtschafts- und Sozialwissenschaftlichen Fakultät
der Christian-Albrechts-Universität zu Kiel

vorgelegt von

Galina Potjagailo

aus Lwow (Ukraine)

Kiel, 2019

January 16, 2020

Erstgutachter: Prof. Dr. Maik Wolters

Zweitgutachter: Prof. Dr. Kai Carstensen

Drittgutachter: Prof. Dr. Jonas Dovern

Tag der mündlichen Prüfung: 15. November 2019

Contents

List of Figures	iv
List of Tables	v
I Introduction	1
II Spillover effects from euro area monetary policy across Europe: a factor-augmented VAR approach	7
III Monetary policy during financial crises: is the transmission mechanism impaired?	8
Contribution of co-authors	9
IV Global financial cycles since 1880	10
IV.1 Introduction	12
IV.2 Data and descriptive statistics	15
IV.2.1 World wars and missing values	15
IV.2.2 Descriptive statistics on historical financial co-movement	17
IV.3 Methodology	19
IV.3.1 Time-varying parameter dynamic factor model (DFM)	19
IV.3.2 Multi-level hierarchical structure	21
IV.3.3 Priors	22
IV.3.4 Estimation	22
IV.4 Results	23
IV.4.1 Global factors	23
IV.4.2 Cyclical properties of global factors	29
IV.4.3 Importance of global co-movement	32
IV.4.4 Sensitivity analysis	35
IV.5 Conclusion	37
Contribution of co-authors	39
V Bibliography	40

A Additional Tables and Figures	45
Acknowledgements	55

List of Figures

I.1	Links between the three essays.	4
IV.1	Global factors.	24
IV.2	Loadings by variables and countries, average over total sample period.	25
IV.3	Great Depression vs. Great Recession.	28
IV.4	Spectral densities of global factors.	31
IV.5	Total variance explained by global factors, by countries and country groups.	34
C.1	Log real GDP growth.	46
C.2	Log real credit growth.	46
C.3	Log real house price growth growth.	47
C.4	Log real equity returns.	47
C.5	Differenced real long term interest rates.	48
C.6	Recursive means and variances of Gibbs sampler draws, selected state variables.	48
C.7	Total variance explained by global factors, by countries and factor type.	49
C.8	Stochastic volatilities of global factors.	50
C.9	Factor loadings on macro-financial factor.	50
C.10	Factor loadings on financial factor.	51
C.11	Factor loadings on variable-specific factors.	51
C.12	Idiosyncratic stochastic volatilities.	52
C.13	Global factors, sensitivity to alternative factor structures.	52
C.14	Explained variance shares, sensitivity to alternative factor structures.	53
C.15	Global factors, sensitivity to alternative prior choices.	53
C.16	Explained variance shares, sensitivity to alternative prior choices.	54

List of Tables

IV.1 Data summary statistics.	17
IV.2 Descriptive statistics: means and standard deviations.	18
IV.3 Average bilateral correlations across countries.	19
IV.4 Cycle length and amplitude, Bry-Boschan algorithm.	30
IV.5 Variance explained by factors, averaged over countries.	33

Chapter I

Introduction

We live in a world that is increasingly interconnected via trade and financial markets. This means that cross-country spillovers and global shocks can affect domestic monetary and financial stability. In trade, indirect linkages due to global value chains are increasingly relevant, with a growing contribution from emerging market economies (Gopinath, 2017). In finance, a rapid expansion in gross capital flows, cross-border and foreign currency lending is reflected in global co-movement of credit and asset prices (Eickmeier and Hofmann, 2013; Rey, 2015). Moreover, international investors' risk perceptions react to financial conditions in center economies and can amplify shocks (Adrian and Shin, 2010; Bekaert et al., 2013).

This implies that economists and policy makers need to be aware of global linkages while being ready to effectively respond to them. Central banks might need to adjust monetary policy in response to foreign fluctuations, and, in large economies, consider the effects of their policy interventions abroad. In this, global exposure can influence or even impair domestic monetary policy transmission, particularly in times of large financial fluctuations or disruptions. On the other hand, financial supervisors might respond to global linkages through macroprudential policies, while facing a trade-off between financial stability and an efficient allocation of funds (Cecchetti and Tucker, 2016). Overall, any policy response requires a clear understanding of the nature of global and foreign shocks, the underlying transmission channels and their economic implications.

In my dissertation, I empirically address various research questions that are highly relevant in this regard. Jointly with my co-authors, I contribute to the understanding of current challenges related to monetary policy effectiveness and financial stability in presence of cross-country spillovers and global macroeconomic and financial booms and busts. The empirical analyses underlying my research are based on advanced time series econometric techniques that exploit the cross-country and cross-variable variation in international data sets for statistical inference, and that partially allow for non-linearity and time-variation. From each analysis, economic policy implications are derived that can help economic policy makers set priorities and evaluate the effects of their interventions.

The dissertation consists of three essays. The PhD thesis is composed of three research papers, one single-authored and two co-authored (Chapters II to IV). The two first papers have been published in peer-reviewed journals; the third paper has been published as working paper, and we plan to submit it to high-ranked peer reviewed journals.

Chapter II comprises my single-authored paper “**Spillover effects from euro area monetary policy across Europe: A factor-augmented VAR approach**” that was published in the *Journal of International Money and Finance* in 2017. The analysis poses the question of whether and how, in presence of strong trade integration and financial openness in Europe, monetary policies of the European Central Bank (ECB) affect 14 European countries outside the monetary union. The issue is highly relevant in view of the expansionary measures conducted by the ECB after the financial crisis. It remains topical in view of a future exit from these policies, which might entail dampening effects on European economies. In the paper, I develop a factor-augmented VAR (FAVAR) model that features various country blocks summarized by common factors. It thus exploits a large cross-country data set in presence of rather short time series in European countries. The analysis accounts for direct and indirect spillover effects to both the real economy and to financial variables. I find evidence for sizable expansionary spillovers on production and financial markets in non-euro area countries after a monetary policy expansion in the euro area, although differences in the size of spillovers according to country characteristics are observed. A fixed exchange rate regime tends to be associated with higher spillover effects to the real economy, whereas higher financial openness tends to go hand in hand with stronger monetary spillovers via financial markets.

Chapter III comprises the paper “**Monetary policy during financial crises: is the transmission mechanism impaired**”, that is co-authored with Nils Jannsen and Maik Wolters and forthcoming for publication in the *International Journal of Central Banking*. During the 2008 financial crisis, central banks eased monetary policy aggressively in an unprecedented way. Although output growth and inflation remained lower than expected in many advanced economies, the counterfactual scenario of less policy intervention is unknown and theoretical predictions are mixed. Empirical analyses on the issue are challenged by the fact that financial crises are rare events. In this paper, we use a non-linear panel VAR (PVAR), and we ask whether monetary policy interventions during financial crises have been effective for a set of 20 advanced economies since 1984. The approach exploits the panel dimension of the data to improve the precision of the estimation in the financial crisis regime, while allowing for a large degree of heterogeneity across countries. Impulse response analysis and variance decompositions suggest that monetary policy is highly effective at the onset of financial crises. For the recent financial crisis episode, counterfactual results also show that in the US—where monetary policy was eased quickly—the downturn in GDP was significantly mitigated, while this was not the case in the euro area, where interest rate cuts started one year later.

Chapter IV comprises the paper “**Global financial cycles since 1880**”, that is co-

authored with Maik Wolters and that has been published as working paper in March 2019. The analysis builds on a recent strand of literature that observes a strong degree of commonality in fluctuations of credit and asset prices across countries (Eickmeier and Hofmann, 2013; Miranda-Agrippino and Rey, 2019). Such a “global financial cycle” might, at the extreme, dominate domestic financial conditions outweighing the role of fundamentals (Rey, 2015; Bruno and Shin, 2015a). However, recent studies question its increasing role over time (Cerutti et al., 2017; International Monetary Fund, 2017), or point out that co-movement might be asset-specific (Ha et al., 2017). The mixed evidence might relate to rather short sample periods analyzed so far, and to a lack of consensus regarding which aggregates are relevant measures of global financial cycles. We provide a detailed picture of global co-movement in credit and asset prices using a flexible dynamic factor model (DFM) over 130 years of data. The model allows for flexible features such as dynamic common and idiosyncratic shocks, time-varying parameters and a multi-level factor structure. We find that global co-movement occurs both across financial sectors and within sectors, and is historically not an entirely new phenomenon. But its importance has increased for some variables since the 1980s: for equity prices, global cycles play currently a dominant and historically unprecedented role. Global credit and house price dynamics have become more protracted and, for a sub-group of rather financially open economies, also more important.

How do the three essays relate to each other? The three papers ask different research questions and approach them with different time series econometric techniques. Nonetheless, both the respective research topics as well as the methodologies are closely interrelated.

Taken together, the essays address topical challenges that monetary policy makers and financial stability authorities are facing in a globalized world. As such, the three chapters could be placed on three corners of a triangle around this main theme, linked via three aspects: monetary policy transmission, cross-country linkages and financial booms and busts (see Figure I.1). The papers in chapters II and III both look at *monetary policy transmission*. Chapter II does so via the focus on spillovers from monetary policy across countries, whereas chapter III looks at domestic monetary transmission in presence of severe financial busts that can occur across various countries jointly. Further, both chapter II and chapter IV deal with *cross-country linkages* and their implications, either regarding the transmission of shocks from one country (or monetary block) to another or regarding the role of joint shocks that drive the financial market dynamics of many countries simultaneously. Finally, chapter III relates to chapter IV via the focus on *financial boom-bust* episodes and financial crises.

From the methodological point of view, all three analyses are based on state-of-the-art time series econometric techniques that exploit the cross-country dimension of the data. The two classes of models employed are Structural Vector Autoregressive Models (SVARs) and factor models. Chapters II and III both use a version of a SVAR model. Standard versions of these models typically suffer from issues related to the so-called curse of dimensionality and omitted variable bias (Canova, 1995). In addition, the analyses in both chapters face the

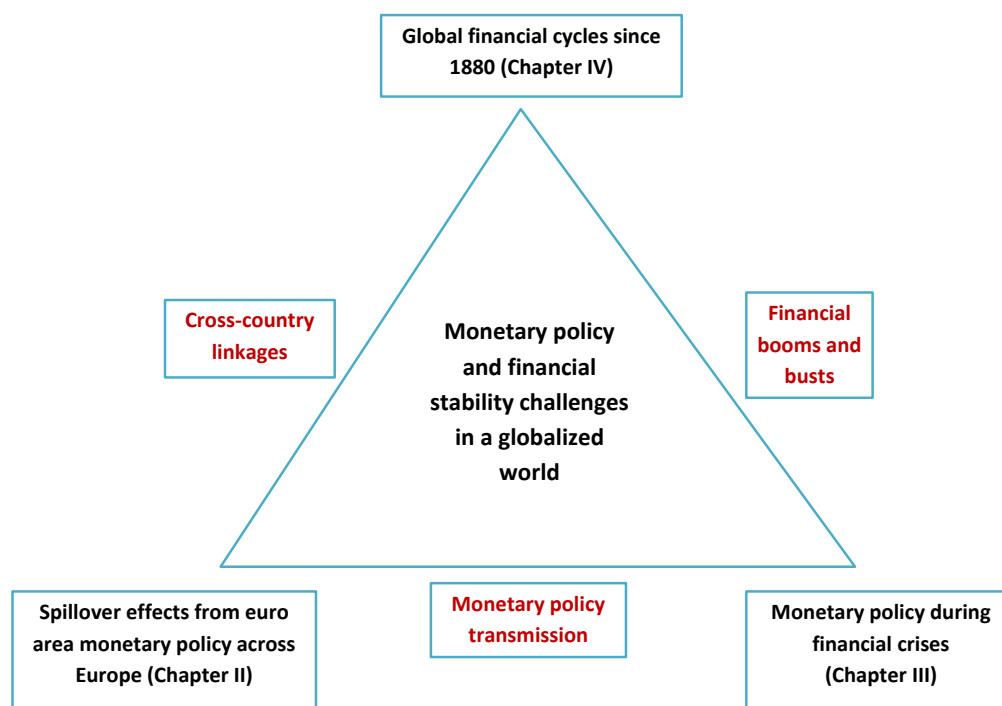


Figure I.1: Links between the three essays.

challenge of rather short time series or a small number of observations during episodes such as financial crises. The chosen modeling approaches alleviate these issues by exploiting the cross-country dimension of the data. The FAVAR model in chapter II augments the VAR model with a set of factors that summarize information over a large number of time series, while keeping the dimension of the VAR small. The Interacted PVAR model in chapter III exploits the panel structure of the data to estimate the average effects of monetary policy during financial crises, even though these are rare events. Both analyses investigate how the effects of a negative shock in short-term interest rates transmit to output, prices and to financial variables, and both conduct comparisons of policy scenarios across countries in order to derive policy implications.

On the other hand, chapter IV uses a dynamic-factor model with time-varying parameters to model joint co-movement in financial variables across countries. The analysis exploits the cross-country dimension by assuming the part of the time series dynamics in each country are driven by common shocks. The analysis does not provide a direct evaluation of policy scenarios. Instead, the focus lies in providing a detailed understanding of the cyclical properties of common cycles and their role for explaining fluctuations in the data over time. The issue of short sample periods is overcome by using a newly available dataset of 130 years of macro-financial data, and by allowing for more flexible dynamics compared to the other chapters. The flexibility is dealt with by relying on Bayesian inference. The models of chapters II and IV both rely on factor structures, but the former is based on static factors,

while in the latter the factors follow a dynamic law of motion. The models in chapters III and IV have in common that they allow for non-linearities in order to assess rare events and changing dynamics over time. But in chapter IV, time-variation is captured directly within the shocks and parameters, whereas in chapter III it is imposed in terms of different dynamics across exogenous states.

Overall contribution to the literature. The three essays contribute to the existing literature by providing new empirical evidence to specific research questions that had not been dealt with before within the respective modeling framework. From a methodological point of view, the analyses add to the literature by extending the cross-country dimension or the time series dimension relative to existing studies, or by introducing non-linearities to the modeling approach in order to capture extraordinary periods or changes over time.

With respect to the research questions that are addressed, the dissertation contributes to the literature that has analyzed monetary policy transmission and its spillovers. Numerous studies have looked at the transmission of monetary policy to domestic output and prices in the US or in the euro area during normal times (e.g., Christiano et al., 1999; Peersman, 2004). A few studies have exploited the panel dimension to look at monetary policy effects during financial stress or high uncertainty regimes (e.g., Aastveit et al., 2013; Dahlhaus, 2017). But to our knowledge none had looked at the role of systemic banking crises for monetary policy transmission within a VAR framework. In the same vein, the literature on monetary policy spillovers focuses on shocks stemming from the US (e.g., Canova, 2005; Georgiadis, 2015). In the case of spillovers from euro area monetary policy across Europe, previous analyses are less numerous and face limitations, some of which the approach in the first essay addresses.

Moreover, the analysis in Chapter IV contributes to a new literature that aims at describing global co-movement in credit, asset prices, and capital flows, the so-called “global financial cycle”, and its role for domestic monetary policy and financial markets (Rey, 2015; Cerutti et al., 2017). Our approach contributes by providing a detailed picture of global financial cycles and their role in explaining financial fluctuations across different countries over 130 years of data. While previous studies looking at long periods have focused on reporting bilateral correlations, our model allows for flexible dynamics. Also, we are to our knowledge the first ones to incorporate time-varying parameters in the analysis of global financial cycles.

Policy implications. The research questions that the papers deal with contribute to some of the ongoing policy debates in international macro and finance. As such, a set of policy recommendations can be derived from the essays’ findings. These can help policy makers in central banks, governmental bodies and international institutions to assess the roles of foreign and global shocks for monetary and financial stability, and they can provide benchmarks for the potential effects of policy interventions. The main policy implications can be summarized as follows.

- Macroeconomic and financial dynamics in many advanced economies are subject to substantial spillover effects from foreign and global shocks. The extent to which a country is susceptible to global and foreign dynamics can depend on country characteristics such as the degree of financial openness and deregulation, the degree of trade openness and the exchange rate regime. [Chapters II and IV]
- The “trilemma” in international macro—the concept that in presence of open capital markets, countries must give up monetary policy independence only in presence of a fixed exchange rate regime—is still alive for European countries, as a flexible exchange rate regime is found to alleviate the extent of spillovers from foreign monetary policy. But there is a trade-off between financial stability and capital market openness, as monetary policy spillovers tend to be larger for more financially open economies. [Chapter II]
- The presence of global shocks can have an impact on the transmission of domestic policies. When the economy is hit by a financial crisis, monetary policy can be particularly effective in stimulating the economy by reducing uncertainty and stimulating asset prices. Thus, in such circumstances, monetary policy makers should intervene quickly. [Chapter III]
- In order to detect risks related to financial instability, policy makers should monitor global fluctuations in financial variables, both within and across financial sectors. Global dynamics might gain weight when they occur jointly across asset prices and credit in presence of financial deregulation. [Chapter IV]

Overall, the presence of financial spillovers, global financial co-movements and the recurrence of financial crises call for internationally enhancing the transparency and supervision of financial linkages and cross-country risk exposures. For instance, coordinated initiatives to make financial supervision and stress test results more transparent might be needed, and the impact of global financial cycles might need to be incorporated into stress test scenarios and regulatory toolkit designs.

— —

The remainder of the dissertation is structured as follows. Chapters II to IV present (or, if the essay is already published, refer to) each of the three essays as outlined above. At the end of chapters III and IV, the contribution of each co-author to the respective essay is laid out. Chapter V lists the bibliographic references to all essays. Appendices A to C present additional tables and figures referred to in the three essays. The document ends with acknowledgements and a declaration to confirm that the dissertation has been produced independently.

Chapter II

Spillover effects from euro area monetary policy across Europe: a factor-augmented VAR approach

This chapter of the dissertation has been published as Potjagailo, G. (2017). Spillover effects from euro area monetary policy across Europe: A factor-augmented VAR approach. *Journal of International Money and Finance* (72), 127-147. <https://doi.org/10.1016/j.jimonfin.2017.01.003>

Chapter III

Monetary policy during financial crises: is the transmission mechanism impaired?

This chapter of the dissertation is co-authored with Nils Jannsen and Maik H. Wolters. It has been published as Jannsen, N., G. Potjagailo, and M.H. Wolters. Monetary Policy during Financial Crises: Is the Transmission Mechanism Impaired? *International Journal of Central Banking*, vol. 15(4), pages 81-126, October. <https://www.ijcb.org/journal/ijcb19q4a3.htm>.

Contribution of co-authors

Nils Jannsen had the idea for the research question and for using an interacted Panel VAR framework. All three co-authors substantially contributed to developing the exact modeling strategy, i.e. the way of modeling financial crisis regimes, the type of the panel model to employ, which variables to include, etc. These aspects as well as open questions and issues along the way were discussed regularly in trilateral meetings, to which all authors contributed actively.

Nils Jannsen had a leading role in developing the ideas regarding controlling for economic recessions in addition to financial crises, as well as regarding the inclusion of variables such as consumer confidence and uncertainty in order to capture transmission channels during financial crises. Nils also did most of the data collection, with some support of the other two co-authors.

Galina Potjagailo did the econometric analysis and the coding in Matlab. She initially implemented the estimation of the the baseline version of the interacted PVAR model, based on the existing approaches in the literature. She then extended it for the case with 4 regimes, and implemented additional sensitivity analyses as well as counterfactual exercises. Galina also contributed to developing strategies on how to tackle these aspects econometrically. She also prepared most of the plots.

Maik Wolters had a leading role on developing the strategy for different types of counterfactual and sensitivity analyses. In addition, Maik had a leading role in drafting the manuscript for the working paper and the published version. Nils and Galina also contributed to drafting and refining of the manuscript.

Chapter IV

Global financial cycles since 1880

This chapter of the dissertation is co-authored with Maik H. Wolters. It has been published as Kiel Working Paper No. 2122 and as IMFS Working Paper No. 132 in March 2019.

Abstract

We analyze cyclical co-movement in credit, house prices, equity prices, and long-term interest rates across 17 advanced economies. Using a time-varying multi-level dynamic factor model and more than 130 years of data, we analyze the dynamics of co-movement at different levels of aggregation and compare recent developments to earlier episodes such as the early era of financial globalization from 1880 to 1913 and the Great Depression. We find that joint global dynamics across various financial quantities and prices as well as variable-specific global co-movements are important to explain fluctuations in the data. From a historical perspective, global co-movement in financial variables is not a new phenomenon, but its importance has increased for some variables since the 1980s. For equity prices, global cycles play currently a historically unprecedented role, explaining more than half of the fluctuations in the data. Global cycles in credit and housing have become much more pronounced and longer, but their importance in explaining dynamics has only increased for some economies including the US, the UK and Nordic European countries. We also include GDP in the analysis and find an increasing role for a global business cycle.

Keywords: financial cycles, financial crisis, global co-movement,
dynamic factor models, time-varying parameters, macro-finance

JEL-Codes: C32, C38, E44, F44, F65, G15, N10, N20

IV.1 Introduction

Today's financial system is global. Banks and investment funds operate across borders and trade on international wholesale and bond markets (Kollmann et al., 2011; Kalemli-Ozcan et al., 2013). While such internationalization has brought many advantages in terms of risk diversification and an efficient flow of funds, the 2008 global financial crisis illustrated major risks. As such, credit and various financial asset classes can exhibit joint boom-bust episodes, with potentially severe repercussions on the real economy (Iacoviello, 2015; Jordà et al., 2015a,b; Menden and Prōano, 2017). In view of financial integration, fluctuations in financial quantities and prices also display a strong degree of commonality across advanced countries, such that financial fluctuations can quickly take a global dimension (Eickmeier and Hofmann, 2013).

Since the 2008 global financial crisis, a literature on the estimation of global financial co-movement has developed. Helbling et al. (2011), Hirata et al. (2012), Miranda-Agrippino and Rey (2015) and European Central Bank (2018) find a strong and recently increasing role of global co-movement for financial variables. Recent papers, however, question the quantitative importance of the global financial cycle (Cerutti et al., 2017b), its increased role over time (International Monetary Fund, 2017), or find evidence only for asset-specific global cycles rather than a joint global financial cycle (Ha et al., 2017). The inconclusive empirical evidence on global financial co-movements might relate to two facts. First, existing studies focus on rather short samples of 25 to 40 years. However, financial cycles have a low frequency (Claessens et al., 2012; Borio, 2014; Rünstler and Vlekke, 2018) and boom-bust episodes are rare events, such that the consideration of a long sample period can be critical. Second, there is no consensus yet regarding which financial aggregates are relevant measures of global financial cycles. The existing studies differ in this regard: some look at risky equity returns only, or at credit and different asset prices individually, others consider composite indices of financial conditions, and yet others look at capital flows. However, joint global co-movement across financial sectors might go hand in hand with sector-specific global dynamics, while potentially evolving differently over time.

Against this background, we analyze cyclical co-movement in credit, house prices, equity prices and interest rates across 17 advanced economies based on a Bayesian multi-level dynamic factor model that allows for time variation in factor loadings and for stochastic volatility. We use over 130 years of data from the Macrohistory Database of Jordà et al. (2017) and Knoll et al. (2017). The sample covers more than 50% of world GDP over the sample period. The model decomposes the cyclical fluctuations in financial variables into global factors capturing the common dynamics across countries and variables and into idiosyncratic components specific to each time series.

We investigate two main research questions. First, what are the main characteristics of global financial cycles: what types of cycles are there and what are their cyclical properties? Second, how relevant is global financial co-movement from a historical perspective in terms

of explaining fluctuations in the data?

Two aspects of our modeling approach are central to address these questions. First, the multi-level factor structure enhances a comprehensive picture of global financial cycles by incorporating global co-movement at different levels of aggregation, i.e. across financial sectors, sector-specific, and between financial variables and GDP. Second, the very long sample period allows to compare recurrent cycles over time, even though financial boom-bust episodes are rare events. To our knowledge, we are the first ones to incorporate gradual time-variation—with respect to the factor loadings and the variances of shocks—in the analysis of global financial cycles, instead of merely comparing sub-samples. Our sample starts with the “first era of financial globalization” prior to World War I: a period characterized by increasing shares of lending and cross-border capital flows relative to GDP (Schularick and Taylor, 2012; Reinhart et al., 2016; Knoll et al., 2017). We also compare two large-scale global financial turmoils and the subsequent recessions: the Great Depression and the Great Recession.

Regarding the first research question, we find evidence for global co-movement at different levels of aggregation, and that the estimated factors trace historic events well. There is a global financial factor capturing joint co-movement between credit, asset prices and interest rates. This factor is closely related to what is referred to as the “global financial cycle” by Rey (2015). According to our results, it displays both high and medium frequency fluctuations, but protracted cycles of 8 to 16 years have gained importance in recent decades. Beyond that, we also find evidence for a global credit cycle and a global house price cycle that became more prolonged and ample since the 1970s reaching a length of about 15 years, as well as a global equity price cycle of a length of 3 to 5 years. Furthermore, there is a global GDP factor that shows cycles of 2 to 8 years, but also some more protracted fluctuations. We find evidence for a global macro-financial factor, but the size of macro-financial shocks declined over time.

Regarding the second question, we find that on average global co-movement explains large, but not predominant shares of fluctuations in financial aggregates. For equity prices, the picture is special: the role of global factors increased steadily and strongly over the historical time span in all economies that we consider; today, more than half of equity price fluctuations are due to global dynamics. This result reflects larger global equity price shocks as well as an increased dependence of most equity prices series on global shocks. For the other financial aggregates, the role of global co-movement is on average smaller and not a new phenomenon from a historical perspective. However, for credit and house prices, there are pronounced differences across countries: the susceptibility to global dynamics increased in the UK, the US and in Nordic European countries, but remained constant or declined in most other considered countries. Finally, the global GDP factor today explains an unprecedented share of 40 percent of GDP fluctuations on average across countries.

The presence of financial cycles implies new trade-offs for policy makers, in particular if such cycles have a global dimension. Central banks might need to weigh price stability

against financial stability (Borio et al., 2018) and domestic monetary policy objectives against cross-country spillover effects (Bruno and Shin, 2015b; Obstfeld, 2015; Cesa-Bianchi et al., 2018). At the extreme, domestic financial conditions might be driven by a global financial cycle and by monetary policy in center economies, outweighing the role of domestic fundamentals (Rey, 2015; Bruno and Shin, 2015a; Cerutti et al., 2017a). This potentially calls for internationally coordinated macroprudential policy, financial regulation and monetary policy (Rajan, 2015; Cecchetti and Tucker, 2016; Gopinath, 2017). Our findings regarding the cyclical characteristics and the importance of global financial co-movement contribute to a thorough understanding of the nature of global financial fluctuations. They imply that both composite indices and individual financial sectors should be carefully monitored by policy makers. The role of global dynamics is most pronounced in equity markets, but for a sub-group of financially open countries the role of global dynamics for credit and house prices has been high for the last 40 years, too. When such dynamics in asset prices and credit occur simultaneously—as captured by the aggregate financial factor—leverage and therefore risks to financial stability might increase substantially (Jordà et al., 2015b).

There are few papers using long historical samples to analyze global co-movement of financial variables that are closely related to our analysis, but differ with respect to the financial variables considered and the method used. Jordà et al. (2019) analyse global asset-specific co-movement, but do not consider a joint global financial cycle across different financial variables. They use averaged bilateral cross-country correlations and focus in particular on the increased co-movement of equity prices since the 1990s. Bekaert and Mehl (2019) use a factor model, but their analysis is restricted to global co-movement of equity returns. Finally, Meller and Metiu (2017) study global co-movement of credit using bilateral cross-country correlations.

We confirm the results from Jordà et al. (2019) and Bekaert and Mehl (2019) of an increasing role of global dynamics for equity prices: we find that this holds for all countries in our sample and is in this sense a truly global phenomenon. Going beyond the previous findings, we detect more protracted and ample common cycles for credit and house prices in recent decades. We do not observe an increased importance of co-movement for credit and house prices on a global scale, but only for a sub-group of financially open economies including the US and the UK.¹ According to our results, global linkages across financial aggregates, i.e. linkages between credit, housing and equity markets, have gained relevance in these countries, and this might make them particularly reactive to global developments. Understanding cross-country heterogeneity is therefore important when thinking about the coordination of financial stabilization policies across countries and sectors.

This said, any study using long, historical data faces limitations regarding the data

¹The difference in results to Jordà et al. (2019) is related to the modeling approach: when using bilateral correlations, we find results that are very similar to theirs. The dynamic factor model is advantageous in several dimensions: it provides direct estimates of common dynamics across many countries simultaneously, allows to describe the cyclical properties of co-movement both across and within financial sectors, directly determines to which extent global dynamics are relevant for individual economies and explicitly models time-variation through the model parameters

quality and its comparability over time. We take these challenges seriously by documenting our treatment of the data carefully, and by using a flexible model that we believe can partially alleviate data issues. The Bayesian estimation approach allows to exploit the long data set, while controlling for changes in the amount of noise in the data, without using unreliable data during the World War years or overly distorting results by interpolating missing data points. We use the dynamic factor model to provide a detailed description of historical patterns that is useful to understand global financial co-movement today. However, for the time being, we refrain from additionally identifying structural drivers behind historical global dynamics, given that such an exercise faces even harsher limitations related to historical data.

The remainder of the chapter is organized as follows. Section IV.2 presents the historical data set and shows stylized facts on historical global financial co-movement. Section IV.3 describes the time-varying dynamic factor model with a multi-level factor structure and section IV.4 presents the results and discusses some robustness checks. Section IV.5 concludes.

IV.2 Data and descriptive statistics

We use annual data on GDP, credit, house prices, equity prices, and long-term interest rates for 17 advanced economies from 1880 to 2013. The data are taken from the Jordà-Schularick-Taylor Macrohistory Database.² Nominal variables are deflated with CPI. We include data for 17 countries for each of these variables, except for house prices, for which we include data for 14 countries only, because of limited data availability.³ Overall, 82 time series are included in the model.

We take logs of all time series except of interest rates, and we take first differences of all series. Since the differenced series show long-run trends, particularly during the 1950s and 1960s, we compute deviations from centered moving averages of ± 8 years.⁴

IV.2.1 World wars and missing values

The historical data pose various challenges for the empirical analysis that we need to take into account prior to estimation as well as when interpreting the results.

First, our sample period includes the two World Wars from 1914 to 1918 and from 1939 to 1945. During these years and the first years after the wars, many data points are missing and available data show strong fluctuations. These reflect the extreme economic environment of war, but also the fact that a precise collection of statistical data was most likely not a priority

²The authors compiled the data set based on a broad range of historical sources and publications of statistical offices and central banks. For details regarding the data sources and the construction of the data series, we refer to the online appendix published on the website.

³Australia, Belgium, Canada, Denmark, Finland, France, Germany, Italy, Japan, the Netherlands, Norway, Portugal, Spain, Sweden, Switzerland, UK and the US. We do not include house price data for Spain, Italy and Portugal because these series are only available from the 1970s or late 1980s onwards. However, we do run a specification including these countries. Although the higher number of missing values makes the estimation less stable, our results remain very similar.

⁴The approach closely corresponds to the one applied in Stock and Watson (2012). Endpoints are handled by truncating the moving average and renormalizing the weights to sum to one.

for many countries during the wars. At the same time, such large short-run fluctuations are very hard to grasp econometrically. Although the dynamic factor model allows for gradual variation of shock variances, strong outliers can distort the results for the periods which we are actually interested in—the early era of globalization up to 1913, the Great Depression and the post-war period. Therefore, we opt for excluding the war periods from our analysis. We do so by setting all observations for the years 1914 to 1922 and 1939 to 1947 (overall 18 years) to missing values, which leaves 116 usable years in our sample. In addition, we identify a few remaining outliers in line with the approach by Stock and Watson (2005), and we also replace them by missing values.⁵

Second, apart from the observations that we set to be unknown manually, the financial variables from the Macrohstory database show missing values for some countries and periods, mostly at the beginning of the historical sample.⁶ Table IV.1 shows summary statistics regarding the total number of observations and the number of missing values for each of the financial variables. Apart from the excluded World War periods, the number of missing values is relatively small: for credit, 5 percent of total observations across countries are missing, for house prices and equity prices about 10 percent of observations are missing, and for long-term interest rates there are only a few missing data points. About 85 percent of all missing values are clustered at the beginning of the sample between 1880 and 1913. More than 10 percent of credit observations and almost 30 percent of house price and equity price observations, respectively, are missing during this sub-period.⁷ Hence, the large share of missing data during the early period implies that we can learn less from the data during this period, and that our global factors refer to only a sub-set of countries for the early sub-period. Also, the comparability of the data across countries is likely to be weaker in the early period.⁸

⁵The method consists in replacing values of the log differenced variables which deviate by more than z times the interquartile range from the median of the respective series. Given that fluctuations in the historical data set are larger than in standard macroeconomic data, we set $z = 7$, whereas Stock and Watson (2005) and Eickmeier et al. (2014) used $z = 3$ and Barigozzi et al. (2014) used $z = 6$. Moreover, instead of replacing such large outliers by median values, we take a more agnostic approach and consider these observations as unknown. Our approach removes overall 27 observations, mostly around the World Wars, but keeps other rather large fluctuations such as those around 1929.

⁶The Macrohstory database includes data from 1870 onwards, but for the first decade the number of missing observations is much larger than for the subsequent period. We therefore use data from 1880 onwards to limit the number of missing values.

⁷Figures C.1 to C.5 in appendix C show the transformed series for all countries over the entire period, also including the World War years that were not used in the estimation, and the periods with missing values. For equity prices, the majority of missing data points at the beginning of the sample refer to smaller economies. For house price and credit, data before 1900 are also missing for larger economies such as the UK (house prices) or France and Spain (credit). The figures also show that many financial series show large fluctuations and spikes during the excluded World War years.

⁸As such, the Macrohstory database mostly relies on national sources for financial data, and for many countries changing national sources over time, during the first part of the sample (Jordà et al., 2017). By contrast, for the post-war period international sources such as the International Monetary Fund or the OECD are used much more broadly. For house price series, variations in the data sources might be particularly relevant for the quality of the data during the early period, as more sources refer to urban (instead of nationwide) prices and as methodologies to measure prices differ across sources (sale prices in the market, listing prices, appraised values) (Knoll et al., 2017).

Table IV.1: Data summary statistics.

	Credit	House prices	Equity prices	LT interest rates
Number of countries included	17	14	17	17
Total sample, 1880 to 2013				
No. observations (130 years)	2278	1876	2278	2278
No. observations, excl. WWs (116 years)	1972	1624	1972	1972
No. missing values	85	168	175	5
No. outliers set to missing	6	6	5	10
Share missings / total observations (excl. WWs)	4.6%	10.7%	9.1%	0.8%
Early era of globalization, 1880 to 1913				
No. observations (34 years)	578	476	578	578
No. missing values	78	143	167	1
Share missings / observations	13.5%	30.0%	28.7%	0.2%
Share missings 1880-1913 / total missings	85.7%	82.2%	92.8%	6.7%

Notes: Data from the Macrohistory Database. Numbers of missing values do not include periods 1914-1922 to 1939-1947 (World War years). There are no missing values for GDP and CPI (17 countries and 1972 observations, respectively).

By taking a historical perspective, we cannot avoid making concessions regarding the quality and cross-country comparability of the data. At the same time, challenges regarding data quality also underline the need for using a flexible model that can account for missing values beyond simple interpolation as well as for variation in the volatility in the data. Within the Bayesian estimation approach, missing data points are sampled using the Kalman filter within the Gibbs sampling algorithm, and data points for the World War years are not used to update the posterior distribution. In addition, the time varying parameters can implicitly capture changes in the volatility of individual time series (stochastic volatilities in idiosyncratic components) or across many series (stochastic volatilities of variable-specific or aggregate factors) that stem not only from structural economic changes, but also from changes in data quality.

IV.2.2 Descriptive statistics on historical financial co-movement

Table IV.2 shows descriptive statistics for the time series included in the analysis, i.e. (log) differenced, detrended and standardized series. Means and standard deviations are shown for five sub-periods representing the “early era of financial globalization” (1880-1913), the inter-war period (1923-1938), the post-war period (1948-1983) and two sub-samples since the Great Moderation (1984-1998, 1999-2013). There are large changes in the level and the volatility over time calling for a flexible model allowing for stochastic volatility. The means of most variables show pronounced drops during the period covering the 1929 stock market crash and the Great Depression in the 1930s; for equity prices and GDP we also see declines during the most recent period that includes the Great Recession. Standard deviations for

most series are higher during the early sub-periods, with the exception of equity prices, for which volatility is largest in the most recent sample.

Table IV.2: Descriptive statistics: means and standard deviations.

	Credit	Housing	Equity	Int. Rate	GDP
1880-1913	0.04 (0.9)	-0.03 (1.1)	-0.06 (0.5)	0.01 (1.1)	0.04 (0.9)
1923-1938	-0.37 (1.2)	-0.14 (1.0)	0.01 (1.0)	-0.15 (1.4)	-0.27 (1.5)
1948-1983	0.15 (0.9)	0.04 (1.0)	-0.08 (1.1)	0.05 (0.9)	0.21 (0.8)
1984-1998	-0.07 (0.9)	-0.10 (0.8)	0.37 (1.0)	-0.01 (0.4)	-0.1 (0.6)
1999-2013	-0.04 (0.7)	0.14 (0.7)	-0.16 (1.2)	-0.04 (0.3)	-0.14 (0.7)
Total	0 (1)	0 (1)	0 (1)	0 (1)	0 (1)

Notes: Means and standard deviations (in brackets) of the variables used for factor analysis, averaged over 17 countries (14 for house prices) and sub-samples. The data were transformed to growth rates or differences (for long-term interest rates), detrended based on a ± 8 years centered moving window, and standardized.

Next, we have a look at measures of cross-country co-variation in the data based on averaged bilateral cross-country correlations.⁹ Table IV.3 shows these measures with respect to each variable separately, the four financial variables jointly (column “Finance”), and all five variables jointly, i.e. financial variables and GDP (column “All”). This gives us a first indication of the size of cross-country co-movements for each variable and across variables, and we can check for potential differences over time based on simple sub-sample comparisons. In the computation of these measures, we have to deal with missing values outside of the Gibbs sampler, and we extra- and interpolate missing values linearly. Results are similar when we exclude the countries with missing data.

Variable-specific correlations increase strongly over time, but those for interest rates and equity prices also show a “swoosh” shape, being highest in the inter-war sub-sample and in the most recent sub-sample. Correlation levels between all four financial variables and between the four financial variables and GDP are overall rather small; they increase slightly over time until the end of the 1990s and roughly double during the most recent sub-sample. This provides a first indication that the role of a global financial cycle and a macro-financial cycle might have increased in recent years.

However, results for these simple measures might draw an incomplete picture. Bilateral correlation measures do not account for co-movement across many countries simultaneously. In addition, the correlations from each variable are not conditioned on each other and thus might capture spurious co-movement. Indeed, global co-movement jointly across variables appears much smaller than variable-specific co-movement according to these measures. Further, the sub-sample results need to be taken with much caution given that they are based on short time periods and might thus be estimated imprecisely and might overstate the degree of co-movement. Indeed, the measures show a rather low co-movement over the total period compared to the sub-sample results. Also extra- and interpolation of missing values might

⁹We have also computed descriptive statistics based on static principal components that are available upon request.

Table IV.3: Average bilateral correlations across countries.

	Credit	Housing	Equity	Int. Rate	GDP	Finance	All
1880-1913	0.05	0.00	0.11	0.13	0.03	0.03	0.02
1923-1938	0.17	0.03	0.36	0.35	0.19	0.06	0.05
1948-1983	0.14	0.04	0.24	0.26	0.26	0.07	0.07
1984-1998	0.33	0.28	0.30	0.22	0.35	0.09	0.13
1999-2013	0.37	0.16	0.51	0.49	0.57	0.19	0.19
Total	0.18	0.07	0.32	0.23	0.23	0.08	0.07

Notes: The first five columns refer to bilateral correlations corresponding to each of the five variables, respectively. The two last columns refer to average bilateral correlations across the four financial variables (“Finance”) and across all five variables (“All”), respectively. Missing values were linearly extra- and interpolated.

bias the results. The dynamic factor model will address these issues via the multi-level factor structure and by exploiting the full sample period while sampling missing values and while allowing for time-variation through the parameters.

IV.3 Methodology

To address time-variation over the long period carefully and to model global co-movement at different levels of aggregation, we estimate a dynamic factor model (DFM) with time-varying factor loadings and stochastic volatility, following the methodology developed in Del Negro and Otrok (2008) and applied in Ritschl et al. (2016). We first introduce the model abstracting from the multi-level factor structure which we explain afterwards.

IV.3.1 Time-varying parameter dynamic factor model (DFM)

A panel of time series is described in terms of a small set of dynamic factors, representing unobserved components that affect all time series jointly, and in terms of dynamic idiosyncratic components, specific to each time series. The time series relate to the factors and idiosyncratic components via the observation equation:

$$Y_t = \Lambda_t F_t + U_t, \quad (\text{IV.1})$$

where Λ_t is a $n \times k$ matrix of time-dependent loadings which relate the n time series Y_t to the K common factors $F_t = [f_{1,t}, \dots, f_{K,t}]$ for $t = 1, \dots, T$ and $U_t = [u_{1,t}, \dots, u_{n,t}]$ are the idiosyncratic components.

The factors and idiosyncratic components follow autoregressive processes of order q and p , respectively:

$$F_t = \Phi F_{t-1} + e^{H_t^f} \xi_t, \quad (\text{IV.2})$$

$$U_t = \Theta U_{t-1} + e^{H_t^u} \chi_t, \quad (\text{IV.3})$$

where Φ and Θ are block-diagonal polynomials of order q and p , respectively, and $\xi_t \sim$

$N(0_{K \times 1}, I_{K \times K})$ and $\chi_t \sim N(0_{n \times 1}, I_{n \times n})$. Hence, the factors are assumed to be orthogonal to each other and not to affect each other at lags.¹⁰ The idiosyncratic components are assumed to be independent across time series so that all co-movement in the data is captured by the common factors. For the lag length we choose $q = 8$ and $p = 1$ following Ritschl et al. (2016).¹¹

The log volatilities of the K factors and of the n idiosyncratic components follow driftless random walks:

$$H_t = H_{t-1} + \eta_t, \quad (\text{IV.4})$$

where H_t are the $K + n$ log volatilities with $\eta_t \sim N(0_{(K+n) \times 1}, \Omega_\eta)$ and $\Omega_\eta = \text{diag}(\sigma_{\eta 1}^2, \dots, \sigma_{\eta K}^2, \sigma_{\eta K+1}^2, \dots, \sigma_{\eta K+n}^2)$. The variances $\sigma_{\eta 1}^2, \dots, \sigma_{\eta K}^2$ correspond to the volatilities of factors, and $\sigma_{\eta K+1}^2, \dots, \sigma_{\eta K+n}^2$ correspond to the volatilities of idiosyncratic components, and all volatilities are assumed to be independent from each other.

Also the $n \times K$ factor loadings are assumed to follow driftless random walks:

$$\Lambda_t = \Lambda_{t-1} + \epsilon_t, \quad (\text{IV.5})$$

where $\epsilon_t \sim N(0_{n \times K}, \Omega_\epsilon)$ and $\Omega_\epsilon = \text{diag}(\sigma_{\epsilon 1}^2, \dots, \sigma_{\epsilon (n \times K)}^2)$. The loadings are thus independent across time-series i , which is an identifying assumption. It implies that, while both factors and loadings vary over time, only factors capture the dynamics in the comovement among the series.

Additional identification restrictions are needed to resolve indeterminacy in the dynamic factor model. On the one hand, the relative scale of the factors and loadings is indeterminate, because the likelihood stays the same if we multiply the loadings by a factor a and divide the factors by a , while adjusting their log volatility accordingly. We address the scale indeterminacy by fixing the initial values of the log volatilities to $h_{j,0} = 0$, following Del Negro and Otrok (2008). On the other hand, the sign of the factors and the loadings is indeterminate, because the likelihood stays the same if we multiply both by -1. We address the sign indeterminacy by restricting the signs of one of the loadings of each factor to be positive. In particular, for each factor, we restrict the variable which exhibits the highest correlation with the starting value of the factor, and whose loadings are not restricted to zero due to the hierarchical factor structure, to load positively on that factor.¹²

¹⁰This is a typical assumption in the literature, see for instance Banbura et al. (2013) and Miranda-Agrippino and Rey (2015), and it significantly reduces the number of parameters to be estimated compared to a model with unrestricted spillover effects across factors. The identification of factors is not affected by restricting the spillovers among them to zero. Ha et al. (2017) extend a linear DFM for dependencies between selected macro and financial factors in order to model macro-financial spillovers, but without allowing for a common macro-financial factor. Within the time-varying framework, we leave such an analysis for future research and focus on the contemporaneous co-movements via factors.

¹¹The number of lags of the idiosyncratic components process is kept small in order to perform quasi-differencing in a straightforward manner, as it is typically done in the literature (Del Negro and Otrok, 2008; Miranda-Agrippino and Rey, 2015; Ha et al., 2017).

¹²Results stay roughly similar when instead, for each factor, the loadings of one of the US, or alternatively, of the UK variables are restricted to be positive.

IV.3.2 Multi-level hierarchical structure

In the baseline specification, we include data on GDP growth and four financial series. We thus require a factor model which is able to account for potential common dynamics between real and financial aggregates, between different financial aggregates, and for individual aggregates across countries. For this purpose, we apply a hierarchical structure to the loadings matrix of the dynamic factor model, as in Kose et al. (2003, 2012), Breitung and Eickmeier (2016) and Ha et al. (2017). We first define a global macro-financial factor. This factor represents co-movement which is present in all time series in the data set, and, most importantly, it accounts for linkages between the real side, represented by GDP growth, and the financial side. Second, we define a global financial factor which captures common shocks driving all financial variables across all countries in the data set. Finally, for each variable we include a variable-specific factor which captures co-movement across countries that is specific to the respective variable.¹³

The observation equation for the multi-level model reads as follows:

$$\begin{bmatrix} Y_t^{gdp} \\ Y_t^{fin_1} \\ \vdots \\ Y_t^{fin_r} \end{bmatrix} = \begin{bmatrix} \Lambda_t^{gdpMF} & 0 & \Lambda_t^{gdp} & 0 & \dots & 0 \\ \Lambda_t^{fin_1MF} & \Lambda_t^{fin_1F} & 0 & \Lambda_t^{fin_1} & \dots & 0 \\ \vdots & \vdots & \vdots & \vdots & \ddots & \vdots \\ \Lambda_t^{fin_rMF} & \Lambda_t^{fin_rF} & 0 & 0 & \dots & \Lambda_t^{fin_r} \end{bmatrix} \begin{bmatrix} f_t^{MF} \\ f_t^F \\ f_t^{gdp} \\ f_t^{fin_1} \\ \vdots \\ f_t^{fin_r} \end{bmatrix} + \begin{bmatrix} U_t^{gdp} \\ U_t^{fin_1} \\ \vdots \\ U_t^{fin_r} \end{bmatrix}, \quad (\text{IV.6})$$

where Y_t^{gdp} are the real GDP growth series and $Y_t^{fin_1}, \dots, Y_t^{fin_r}$ are the $r = 4$ financial series included in the model, over N countries, respectively. All time series depend on the macro-financial factor f_t^{MF} . Further, zero restrictions are imposed on the loadings matrix such that only the financial series, but not GDP, respond to the financial factor f_t^F , and such that the time series for each variable depend on their corresponding variable-specific factor, f_t^{gdp} or $f_t^{fin_1}, \dots, f_t^{fin_r}$, but not on the other variable-specific factors. U_t^{gdp} and $U_t^{fin_1}, \dots, U_t^{fin_r}$ are the idiosyncratic components of each variable over N countries, respectively. The factors and idiosyncratic components evolve as autoregressive processes with stochastic volatilities, as specified in equations (IV.2) to (IV.4), the loadings evolve as random walks as specified in equation (IV.5).

¹³We do not include regional factors, but only allow for cross-country heterogeneity via the factor loadings. It is difficult to a priori define country groups over the long sample period. For instance, the closer integration among euro area countries only refers to the latest part of the sample. In the early part of the sample, integration of some of the euro area economies might have been stronger with the UK, which in turn had close links to Australia and Canada via the British Empire. At the same time, we expect regional factors to be a priori less relevant given that we consider 17 advanced economies with rather similar characteristics.

IV.3.3 Priors

The priors for the variances corresponding to the law of motion of the loadings $(\sigma_{\epsilon 1}^2, \dots, \sigma_{\epsilon n}^2)$, as well as the priors for the stochastic volatilities of the factors and idiosyncratic components $(\sigma_{\eta 1}^2, \dots, \sigma_{\eta K}^2, \sigma_{\eta K+1}^2, \dots, \sigma_{\eta K+n}^2)$ reflect the amount of variation over time in the parameters of the model. The variances are assumed to follow inverse gamma distributions

$$\sigma_{\epsilon_i}^2 \sim IG(\nu_{\epsilon}, s_{\epsilon}^2),$$

$$\sigma_{\eta_j}^2 \sim IG(\nu_{\eta}, s_{\eta}^2),$$

for $i = 1, \dots, n$. and for $j = 1, \dots, K, K + 1, \dots, K + n$. The scale hyperparameters s^2 represent beliefs regarding the amount of variation in the innovations, and the degrees of freedom hyperparameters ν represent the strengths of these beliefs.

We choose the priors based on the belief that fluctuations over time in the loadings and stochastic volatilities are limited to gradual, long-term changes. In this way we want the parameters to capture structural and institutional changes affecting the degree of global financial integration, as opposed to short-term global cyclical fluctuations, which are captured by the estimated factors. At the same time, we want to incorporate the belief that, over the long period under consideration, sizable smooth changes in the susceptibility of individual time series to global shocks may well have occurred due to structural developments specific to that variable or country. We therefore choose the priors such that variation in the loadings is favored somewhat over variation in the stochastic volatilities by setting the scale parameter for the variance of the former to be somewhat larger compared to the latter.¹⁴

In particular, we set $s_{\epsilon}^2 = 0.1$ for the scale of the loadings and $s_{\eta}^2 = 0.025$ for the scales of all stochastic volatilities, and we set all the degrees of freedom parameters to $\nu_{\epsilon} = \nu_{\eta} = 134 = T$.

For the autoregressive coefficients, we specify shrinkage priors which punish more distant lags. The prior for the AR-coefficients of the factor equation ϕ_1, \dots, ϕ_q is

$$\phi_{prior} \sim N(0_{q \times 1}, \underline{V}_{\phi}),$$

where $\underline{V}_{\phi} = \tau_1 \text{diag}(1, \frac{1}{2}, \dots, \frac{1}{q})$ and $\tau_1 = 0.2$. The prior for the AR-coefficients of the idiosyncratic components $\theta_{i,1}, \dots, \theta_{i,p}$ is

$$\theta_{prior} \sim N(0_{p \times 1}, \underline{V}_{\theta}),$$

where $\underline{V}_{\theta} = \tau_2 \text{diag}(1, \frac{1}{2}, \dots, \frac{1}{p})$ and $\tau_2 = 1$.

IV.3.4 Estimation

We estimate the model using the Gibbs sampler. We sequentially draw from four blocks of standard conditional distributions to obtain an empirical approximation of the joint distri-

¹⁴Del Negro and Otrok (2008) follow a similar approach in their analysis of global business cycle comovements between 1970 and 2005, in order to achieve smooth variation not only in the stochastic volatilities, but also in the loadings.

bution of parameters and state variables.

In the first block, we sample the time-varying factor loadings conditionally on the factors, stochastic volatilities and time invariant parameters using Carter and Kohn's algorithm.¹⁵ In the second block, we sample the factors conditionally on the hierarchical loadings matrix with zero restrictions, the stochastic volatilities and the time invariant parameters as in Carter and Kohn (1994). We sample missing values within Carter and Kohn's algorithm. For the World War years, for which all series are taken as unobserved, we skip the updating step in the Kalman filter. For other missing values, where only some of the series are missing in a given year, we set the respective data point equal to zero and attach a very high variance to it. In the third block, we sample the stochastic volatilities conditionally on the other state variables and on the parameters, as in Kim et al. (1998). In the fourth block, we estimate time invariant parameters via Maximum Likelihood, conditionally on the factors, loadings and stochastic volatilities.¹⁶

We use principal component estimates as starting values for the factors and loadings. We run the sampler for 20.000 draws. We discard the first 80% (16.000) as burn-in and we save every eighth draw to limit autocorrelation of the draws, which yields 500 draws used for inference. We check the convergence of the Gibbs sampler via visual inspection of the draws for different parameters and state variables and by calculating the recursive means and variances of the draws, which gave satisfactory results.¹⁷

IV.4 Results

IV.4.1 Global factors

Figure IV.1 shows the medians from the posteriors of the seven factors measuring global cycles, together with 68 percent credible sets. The global factors are estimated precisely, at least for the period since 1900. There is significant global co-movement of a cyclical nature jointly across variables, i.e. between GDP and financial variables (the macro-financial factor) as well as between credit and various asset prices (the financial factor), throughout the sample period. The global macro-financial factor predominantly captures the boom-bust episodes of the early era of financial globalization and the Great Depression. The global financial factor shows significant fluctuations over the whole sample and captures important historical events like the Great Depression or the recent Global Financial Crisis.

¹⁵Prior to Gibbs sampling, we eliminate the idiosyncratic terms from the state vector, so that its dimension does not increase with n , via quasi-differencing equation (IV.1), as in Quah and Sargent (1993) and Del Negro and Otrok (2008).

¹⁶In order to estimate the autoregressive coefficients in equation (IV.3) via Maximum Likelihood, we need a series of error terms U_t without missing values. Therefore, we additionally sample the idiosyncratic components conditional on the factors, the loadings, the stochastic volatilities and the time invariant parameters using Carter and Kohn's algorithm. For this purpose, we define a state space model with the measurement equation $y_{i,t} = \kappa_{i,t} + u_{i,t}$, where $\kappa_{i,t} = \lambda_t f_t$ is a time-varying constant, and $u_{i,t}$ is the state variable.

¹⁷Figure C.6 in appendix C shows the recursive means and recursive variances of the Gibbs sampler draws for selected state variables.

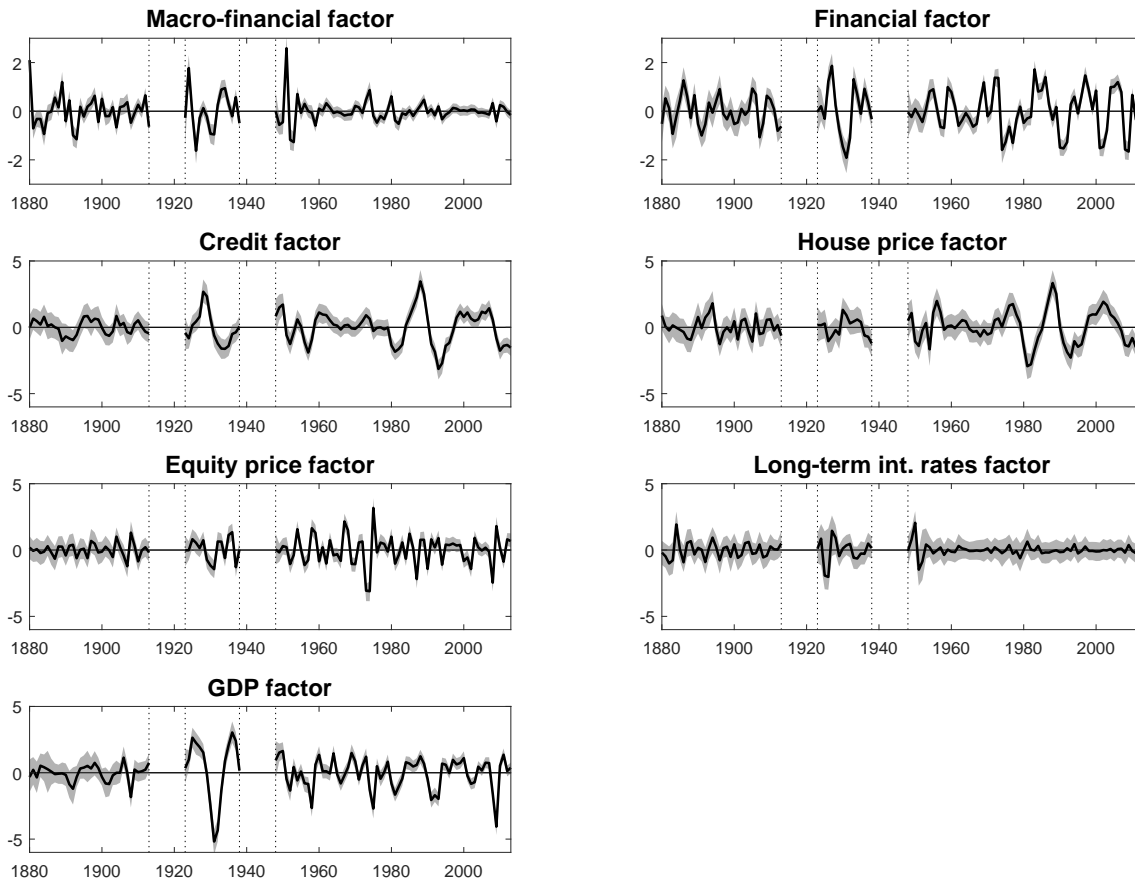


Figure IV.1: Global factors.

Notes: The macro-financial (financial) factor represents common dynamics across all (all financial) variables and countries. The remaining factors represent common variable-specific dynamics across countries. Solid lines show the posterior median, gray areas show the 68 percent credible sets. Data during the two World Wars and the years thereafter (1914 to 1922, 1939 to 1947) are set to missing values and not used to update the posterior, the factors are thus not plotted over these periods (indicated by dotted vertical lines).

Conditionally on these two aggregate factors, there is substantial variable-specific financial co-movement in credit, house prices and equity prices. Global co-movement in credit is pronounced during the inter-war period. In addition, starting from the 1970s there are long and ample parallel fluctuations in global credit and global house prices. The global equity price factor shows short cycles and captures all important stock market booms and busts since 1929. Only the long-term interest rate factor is insignificant and shows no fluctuations during the post-war period, with loadings also being close to zero. As we show in section IV.4.3, the macro-financial and the financial factor capture most of the global fluctuations in long-term interest rates. Finally, there is significant global GDP-specific co-movement since the beginning of the 20th century above and beyond the fluctuations captured by the macro-financial factor. The global GDP factor captures all major business cycles at least since the inter-war period.

Overall, there is significant global co-movement at different levels of aggregation. The aggregate factors have a smaller amplitude compared to the variable-specific factors. The

factors have different cycle lengths and the cyclical properties of some of the factors change over time. We analyse this in greater detail in section IV.4.2.

Factor loadings

Figure IV.2 shows the loadings of the time series (rows) to the factors (columns), averaged over time (median draws: circle markers; 68 percent credible sets: whiskers). The loadings provide an idea of how individual time series relate to the estimated global shocks and thus allow to interpret the factors better. With some exceptions that we mention below, most loadings do not show large changes over time.¹⁸

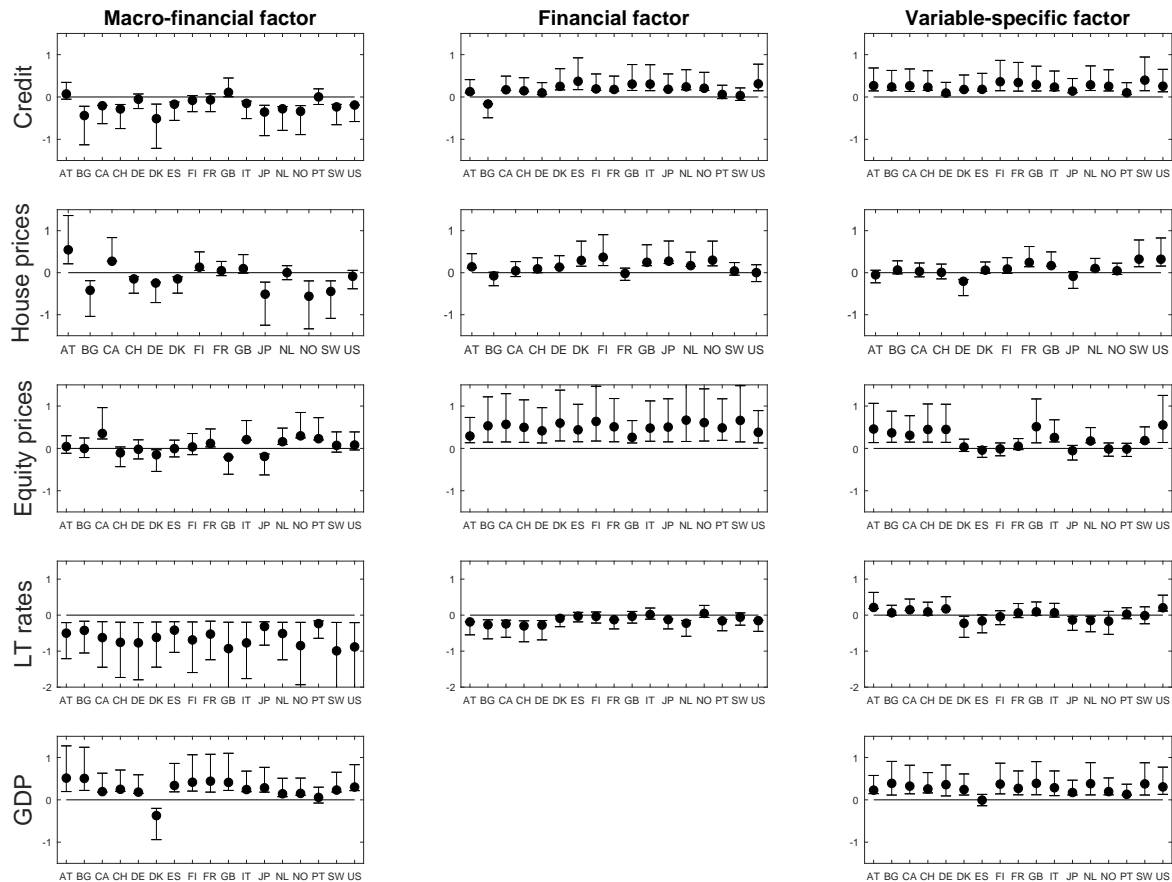


Figure IV.2: Loadings by variables and countries, average over total sample period. Notes: Medians over 500 retained Gibbs draws (circle markers) and 68 percent credible sets (whiskers). Loadings are averaged over time. GDP series do not load on the financial factor via the multi-level factor structure.

The loadings to the macro-financial factor reflect that macroeconomic boom periods are often associated with low interest rates: almost all GDP series are associated positively and significantly with the macro-financial factor, whereas all long-term interest rates load markedly and significantly negatively. By contrast, the loadings of the other financial aggregates are positive for some countries, but negative for others. They are only significant

¹⁸Additional figures showing the evolution of factor loadings over time are shown in appendix C (see also section IV.4.3 for a discussion).

for about half of the economies, indicating that there are no globally synchronized contemporaneous co-movements between GDP and these series, but rather macro-financial linkages for selected countries only. Nonetheless, additional spillovers between global macroeconomic and financial factors might be present at time lags, something that we do not control for.

The financial factor captures global joint co-movement of the four financial variables. Most credit series, all equity price series, and about half of the house price series load significantly positively on that factor, whereas long-term interest rates in about half of the countries load negatively. Hence, the volume of credit and housing and equity returns tend to jointly move together, whereas interest rates tend to be low when credit and asset prices are high. This role of the financial factor is particularly strong for equity prices and increases substantially over time in most countries (Figure C.10). For credit and house prices, the loadings to the financial factor increase towards the end of the sample in about half of the countries, including the US, UK and some Nordic European countries, reflecting the boom-bust cycles in credit-financed real estate since the 1980s in these economies.

Turning to the variable-specific factors, all credit series load significantly positively on the credit factor, so that the credit factor in fact captures synchronized global co-movement. Only some of the house price series load significantly positively on the global house price factor, while there is no link for others over the total sample period. However, most loadings to the house price factor increase and turn positive around the 1970s reflecting a synchronization in global housing prices towards positive co-movement. At the end of the sample period, the house price factor represents to a greater extent truly global co-movement, with only the German and Japanese loadings remaining negative (Figure C.11).¹⁹ Next, more than half of the equity returns load significantly positively on the equity price factor, with the US and UK loadings being largest. For some countries, however, the loadings on the equity price factor are close to zero; most of the global dynamics in their equity prices seem to be fully captured by the financial factor.²⁰ Finally, almost all GDP series load positively on the global GDP factor, so that this can be interpreted as a global business cycle.

Global factors and historical events

In how far do the estimated factors capture historical episodes of recessions and financial fluctuations? We discuss this question for different sub-periods covered by our data, and we compare the dynamics of global factors during the Great Depression following the 1929 stock market crash and the great Recession following the 2008 financial crisis.

Dynamics during the “early era of financial globalization” between 1880 and 1913 are mostly reflected by fluctuations in the two aggregate factors. The macro-financial factor

¹⁹The result for Germany is in line with the result of European Central Bank (2018) that cycles in credit and house prices in Germany differ from those in other European countries.

²⁰We also run Granger causality tests for the different factors (results are available upon request), and find that the equity price factor Granger causes the financial factor, but not vice versa. Hence, the fact that we observe large positive loadings of US and UK equity prices on the equity price factor, while for other economies, equity price dynamics are rather captured by the financial factor, might reflect that the US and UK stock markets lead the dynamics of other stock markets.

shows a prolonged bust during the Depression 1882-85 and around the Panic of 1893 and shorter and smaller busts during the Panics of 1901 and 1907. The financial factor shows a boom starting in the mid-1880s after the Depression of the early 1880s, followed by a bust in 1893, as well as boom-busts around the 1907 and 1910/11 panics. The variable-specific global factors are mostly insignificant during the early era, although the credit, house price and GDP factors show marginally significant declines around 1893, and the equity price factor shows significant short-lived fluctuations around 1907 and 1911.

Figure IV.3 shows the estimated factors again for the periods around the Great Depression (t=0 at 1930, dashed lined) and the Great Recession (t=0 at 2008, solid lines). The two episodes appear overall not too different in terms of the fluctuations in the global factors, which underlines the recurrent nature of global financial boom-bust episodes and associated recessions over the historical time period. In particular, the fluctuations in global credit are very similar across the two episodes. Also the global financial factor behaves quite similarly, but it displays a more prolonged slump during the Great Depression, opposed to a double-dip during the Great Recession associated with the euro area sovereign debt crisis. Greater differences occur for global asset prices. The slump in equity prices is more persistent during the Great Depression reflecting the persistent effects of the 1929 stock market crash. Housing prices did not contract during the Great Depression on a global scale, but there is a global housing slump around the Great Recession reflecting that the global financial crisis originated in the real-estate sector. Global GDP initially behaves very similarly during the two episodes. However, despite the stronger fluctuations of asset prices, the busts in the global macro-financial cycle and in global GDP are less pronounced and more short-lived in the Great Recession compared to the Great Depression. This result reflects the larger and more protracted downturn during the Great Depression caused by tight monetary policy due to the gold standard, while the aggressive use of monetary and fiscal policy measures, together with the prevailing flexible exchange rate frameworks, alleviated the drop in global GDP in the recent episode compared to the Great Depression (see, e.g., Almunia et al., 2010).

Turning to the post-war period, we observe rather short-lived fluctuations in most financial factors during the 1950s and a recession in the global GDP cycle ("Eisenhower Recession" 1958). The Bretton-Woods era characterized by global capital controls is reflected in the fact that the global credit and house price factors, as well as the macro-financial factor, stay mostly flat during the 1960s until the beginning of the 1970s; global GDP also shows relatively small fluctuations during that period. The global equity price cycle shows a very strong drop during the stock market crash of 1973-74 which is also associated with a prolonged bust in the aggregate financial cycle during the 1970s and a recession in global GDP.

For the period since the 1980s, we observe lengthy and ample boom-bust episodes which are most pronounced for the credit and the house price factor. After a trough during the early 1980s recession, captured by the global GDP factor, the credit and the housing factor and to a smaller extent the global financial factor reflect the housing boom in the 1980s in

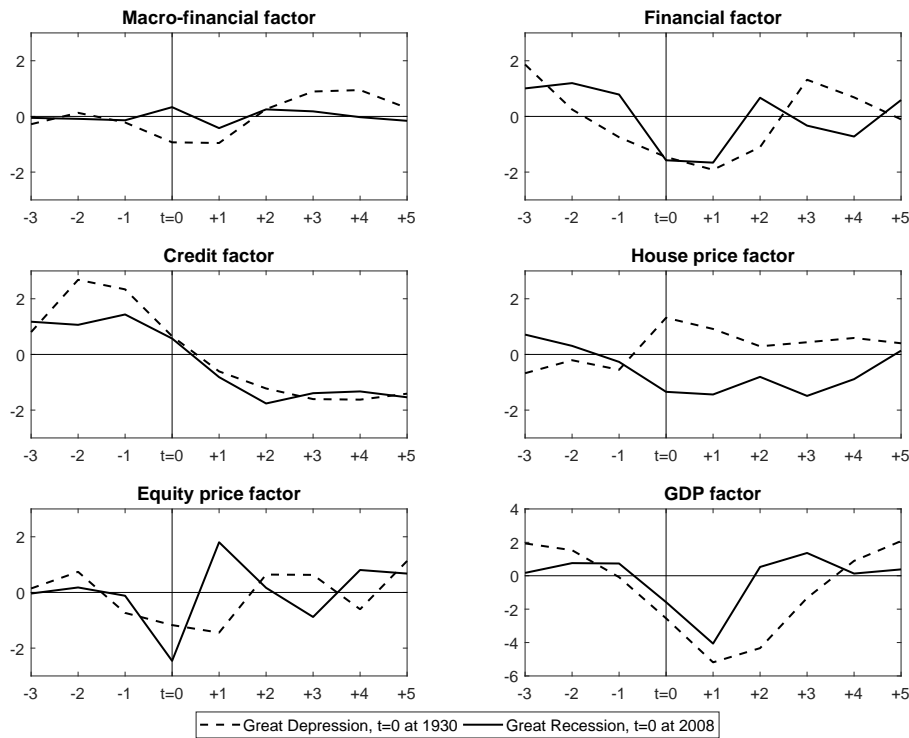


Figure IV.3: Great Depression vs. Great Recession. Estimated global factors.

the US, the UK, Australia, Japan and the Nordic countries. The demand for commercial estate grew during that period, driven by structural change towards personal and financial services that was fueled by financial liberalization policies (Ball, 1994). The resulting bust during the 1990s, the housing boom that preceded the global financial crisis, as well as the subsequent bust are clearly captured by the credit and the housing factors, and to a lesser extent by the financial factor. Recalling that since the 1980s the loadings of the credit and housing factor are strongly positive for all countries, these large parallel housing and credit cycles reflect truly global developments that are much different from dynamics observed for the previous 100 years. The global equity price factor reflects the stock market turbulences around the end of the 1980s and beginning of the 1990s, the burst of the dot-com bubble and the dynamics around the 2008 global financial crisis. The GDP factor captures all the major cycles since the 1980s including the early 1980s recession, the early 1990s recession, and the 2001 and the 2008-2009 recessions.

Overall, the estimated global factors trace historic events well. During some periods, major events are captured predominantly by global joint fluctuations across variables, but during others variable-specific co-movement is important as well. The pronounced global credit and house price cycles since the 1980s stand out in this respect. Hence, for policy makers it is important to monitor both, global movements in composite indices as well as in individual financial sectors.

IV.4.2 Cyclical properties of global factors

The global factors presented above appear to exhibit different amplitudes and fluctuations of different and potentially time-varying lengths. In order to assess the cyclical properties of the factors in greater detail we use two approaches: we identify cycle lengths and amplitudes via the Bry-Boschan cycle dating algorithm as in Harding and Pagan (2002), and we consider the estimated factors within the frequency domain via spectral density analysis (see Verona (2016) and Strohsal et al. (2019) for related analyses for domestic financial cycles). We do this for the total sample period as well as for various sub-samples: the early era 1880-1913, the early era and the inter-war period 1880-1938 (excluding the years 1914 to 1923), the post-war period until the end of Bretton-Woods 1948-1972, and two recent sub-samples, starting in 1973 until 2013 (“post-Bretton-Woods”) and starting in 1984 until 2013 (“Great Moderation + Global Financial Crisis”).

Table IV.4 shows the results from the Bry-Boschan dating algorithm. After identifying peaks and the number of cycles, i.e. periods between subsequent peaks, we show the average cycle length for each factor as well as the maximum and average amplitude in terms of the distance between the maximum peak and lowest trough and the average peak and trough, respectively.²¹

Over the total sample period, the credit factor shows the highest cycle length with 10 years. The house price factor and the GDP factor show a standard business cycle length of 7 years, respectively. The other factors all have a shorter length of 4 to 5 years. The amplitudes of GDP, the credit and house price factors are higher compared to the other variables. When looking at the maximum amplitude, the GDP factor shows the largest amplitude driven by the very large swing during the Great Depression. The credit and the house price factors has just a slightly smaller amplitude during the credit and house price cycle of the 1980s.

There is substantial variation over time for some of the factors. Cycles were particularly short and of low amplitude in the Bretton-Woods period reflecting the fact that capital controls limited financial fluctuations during this period. The cycle length and amplitude of the credit and house price factors increased substantially after the end of the Bretton-Woods era, with the longest and most pronounced cycles of 15 years length occurring in the most recent subsample starting in 1984. This reflects the pronounced parallel boom-bust cycles in credit and housing since the 1980s described above. The GDP factor exhibits long cycles of about 12 years before World War II reflecting in particular the long cycle during the Great Depression. Fluctuations after World War II start with short-lived cycles, but since the 1970s the global business cycle length has increased substantially up to 10 years. By contrast, for equity prices and long-term interest rate there is little change in the cyclical properties over time.

²¹To apply the Bry-Boschan algorithm, we need the series to be in log-levels and we thus cumulate the estimated factors over time. The algorithm identifies a peak in y_t at time t when $y_t > y_{t-1}$ and $y_t > y_{t+1}$. Results remain qualitatively similar when peaks are identified relative to two lags and leads, but the lengths of the GDP factor and of the aggregated factors increase somewhat.

Table IV.4: Cycle length and amplitude, Bry-Boschan algorithm.

	Total sample: 1880-2013	Early era: 1880-1913	Early era+ inter-war: 1880-1913, 1923-38	post-war /Bretton-Woods: 1948-1972	post-Bretton-Woods: 1973-2013	Great Mode-ration/FC: 1984-2013
Average cycle length (years)						
Macro-financial factor	4	4	4	5	5	4
Financial factor	5	4	4	6	5	5
Credit factor	10	9	10	8	10	15
House price factor	7	4	5	6	14	15
Equity price factor	4	3	4	4	4	4
LT interest rate factor	4	4	5	4	5	4
GDP factor	7	11	13	4	7	10
Average Amplitude (mean peak to mean trough of cumulated factors)						
Macro-financial	1	1	1	1	0	0
Financial	2	1	1	2	3	3
Credit	4	2	4	3	7	11
House prices	3	1	1	2	10	10
Equity prices	1	1	1	2	2	1
Interest rates	1	1	1	1	0	0
GDP	3	2	5	1	4	5
Maximum Amplitude (max. peak to min. trough of cumulated factors)						
Macro-financial factor	4	2	4	3	2	1
Financial factor	6	3	5	3	6	5
Credit factor	12	4	8	6	12	12
House price factor	11	4	4	5	11	10
Equity price factor	7	2	3	4	6	4
LT interest rate factor	4	2	4	2	1	1
GDP factor	14	3	14	5	7	7

Notes: Peak and troughs identified based on cumulated estimated factors (i.e. global cycles in log levels). Peak in y_t at time t when $y_t > y_{t-1}$ and $y_t > y_{t+1}$. Average cycle length refers to average time from peak to peak. Sub-sample “early era+inter-war” excludes WWI.

Figure IV.4 shows the spectral densities of the estimated factors for cycle lengths between 2 and 32 years over the total sample period (black solid lines) and over sub-samples. They provide a more complete picture of the presence of cycles of different frequencies in the factors, as all cycle lengths relevant for a factor can be detected instead of only considering average lengths. Peaks in the spectral densities indicate recurrent cyclical fluctuations of the respective length. The results reveal that the aggregate macro-financial and financial factors span a rather wide range of the frequency spectrum, whereas the variable-specific factors cover only specific parts of the frequency range. In particular, the spectral density of the financial factor shows peaks both at cycle lengths of above 8 to 16 years as well as at lengths of 3 to 6 years. By contrast, the equity price factor and long-term interest rate factor show fluctuations predominantly at short cycle lengths of 3 to 5 years, whereas the credit and house price factor cover spectra corresponding to cycles of above 8 up to 20 years. Finally, the global GDP cycle shows a large share of fluctuations at frequencies corresponding to 4 to 6 years and between 8 and 20 years.

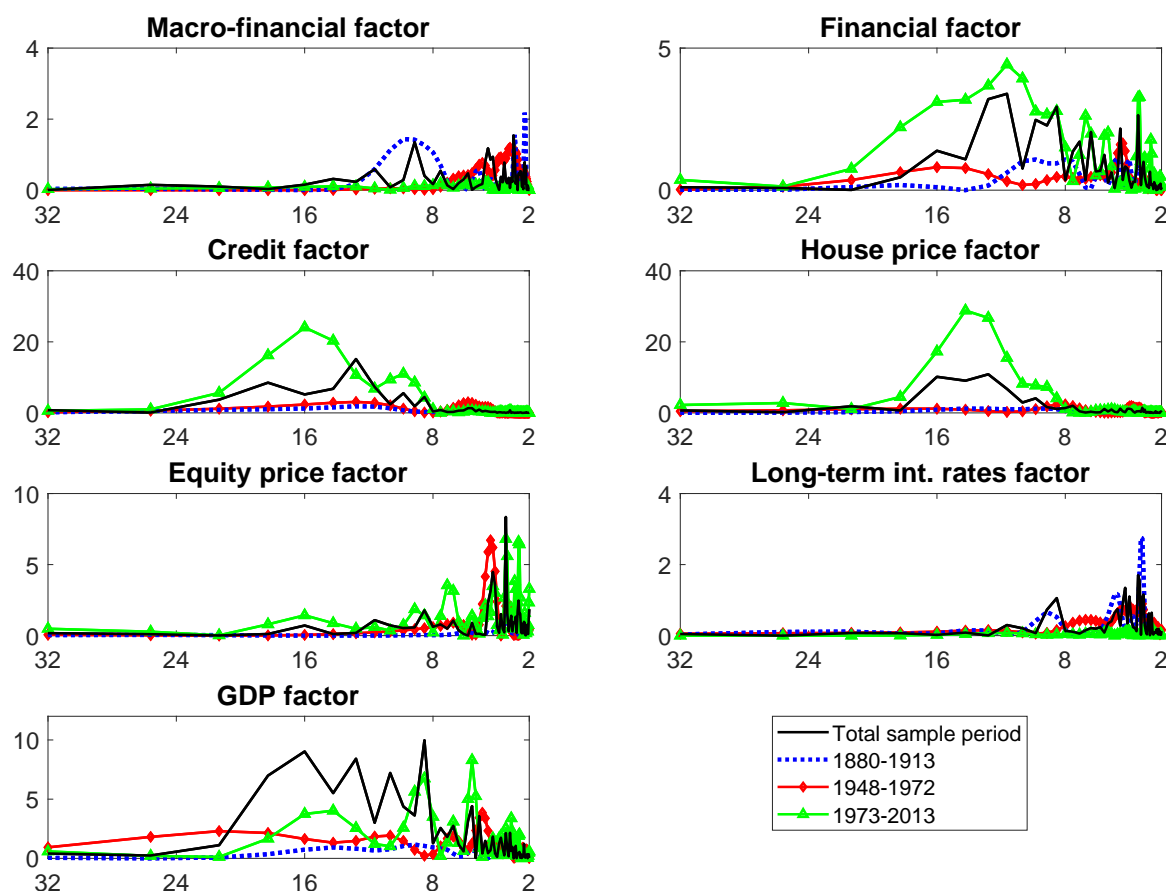


Figure IV.4: Spectral densities of global factors.

Notes: The x -axis measures the length of cycles from 2 years to 32 years. Spectral densities are based on detrended, differenced series and are computed over the total period (black solid lines) and over the subsamples 1880-1913 (early era, blue dotted lines), 1948-1972 (post-War/Bretton-Woods, red line with diamond markers) and 1973-2013 (post-Bretton-Woods, green line with triangular markers). Spectral densities over the inter-war period are not reported, as some of the densities are very large at medium frequencies and likely to be biased through the exclusion of World Wars.

Overall, the results of the spectral density analysis go in the same direction as the ones of the algorithm-based analysis. In the early part of our sample both the aggregate financial cycle and the variable-specific cycles show somewhat less regular cycles with cycle lengths and amplitudes similar or even smaller compared to the global business cycle. However, financial cycles became more prolonged and ample since the 1970s. This holds in particular for global credit and house prices. We find that these variable-specific cycles show a longer length and higher amplitude compared to the aggregate factors since the 1970s. Thus, controlling for variable-specific cycles is important to capture substantial global financial fluctuations at different frequencies. Our findings confirm the results from earlier papers that cover recent sample periods and that observe a financial cycle length of 15 to 20 years, where the (domestic) financial cycle is defined in terms of credit and house prices (see, e.g., Claessens et al., 2012; Borio, 2014; Rünstler and Vlekke, 2018; Lang and Welz, 2018). Our finding of time-variation in the cyclical dynamics of global financial co-movement is in line

with Filardo et al. (2018), who, based on a long sample period, find that the US credit cycle became more protracted during the post-War period.

IV.4.3 Importance of global co-movement

Having provided a detailed picture of the characteristics of historical global financial cycles, we now turn to the question of how relevant these common shocks are for explaining fluctuations in the individual time series relative to idiosyncratic fluctuations. For this purpose, we compute the shares of variance in each time series explained by the global factors for each period of time, which gives us a large panel of results on explained variances. In order to summarize the results, we present variance decompositions for each variable, averaged over the total sample period as well as over five sub-samples. Table IV.5 distinguishes explained variance shares by factor types and shows credibility sets, summarizing the results across countries. In addition, Figure IV.5 shows the shares of explained variance for selected countries and for country groups: the UK, the US, Continental Europe, Nordic Europe (Denmark, Sweden, Norway, Finland) and Others (Australia, Canada, Japan).²²

In the upper part of Table IV.5 results averaged over the full sample period are shown. Global co-movement explains considerably large, albeit not predominant shares of fluctuations in financial aggregates and GDP over the long sample period. The share of fluctuations explained by global co-movement is largest for equity prices (about 40 percent) and smallest for credit and house prices (about 20 percent); about 25 percent of fluctuations in long-term interest rates and GDP, respectively, are explained by global factors. The global dynamics in credit and in GDP, are dominated by the respective variable-specific factors. For equity prices, the financial factor plays the most important role, followed by the equity price factor. For house prices, all three types of factors are equally important, whereas global dynamics in long-term interest rate are dominated by the macro-financial factor.

In how far did the role of global factors change over time? The lower panel of Table IV.5 shows that most variation occurred for equity prices: the importance of global co-movement strongly and steadily increased over time. In the most recent period, more than 50 percent of equity price fluctuations are explained by global factors. This reflects strongly increasing roles both of the aggregate financial factor and the equity price factor, explaining 34 percent and 16 percent of equity price fluctuations in the recent period, respectively. Strikingly, Figure IV.5 additionally shows that global factors became more important for equity prices in all countries and country groups in our sample. In some countries, such as the UK, more than 60 percent of equity price fluctuations are due to global factors in the most recent sub-sample.

For the other financial aggregates, the role of global factors remains rather stable over time—at least on average across countries. For credit, the role of the global credit factor increased while the variance shares explained by the aggregate factors declined, leading to almost no change in sum. For house prices, a weak “swoosh” shape is observed, with the

²²Figure C.7 in appendix C shows more detailed results for each country.

Table IV.5: Variance explained by factors, averaged over countries.

	Credit	House prices	Equity prices	LT rates	GDP
Full sample					
Macro-fin factor	4 (1;11)	6 (2;14)	2 (0;9)	20 (12;32)	7 (2;16)
Financial factor	5 (1;13)	5 (1;12)	24 (13;36)	3 (1;8)	-
Var-specific factor	12 (4;25)	7 (2;16)	11 (6;18)	3 (1;9)	18 (10;29)
Total	21 (7;48)	17 (5;42)	37 (20;63)	26 (13;49)	25 (12;46)
Sub-samples					
1880-1913					
Macro-fin factor	7 (3;16)	8 (3;18)	3 (0;12)	21 (12;33)	9 (3;19)
Financial factor	6 (1;15)	4 (1;13)	15 (5;29)	5 (1;12)	-
Var-specific factor	8 (1;22)	6 (1;16)	5 (1;13)	3 (1;9)	6 (1;17)
Total	21 (5;53)	18 (5;47)	23 (7;53)	29 (14;54)	15 (4;36)
1923-1938					
Macro-fin factor	5 (2;12)	7 (3;14)	2 (0;8)	22 (13;32)	8 (3;17)
Financial factor	5 (1;12)	4 (1;12)	22 (11;33)	5 (2;11)	-
Var-specific factor	11 (3;24)	6 (1;15)	10 (5;18)	4 (1;10)	17 (10;25)
Total	21 (7;47)	16 (5;40)	34 (17;59)	31 (16;53)	25 (14;42)
1948-1983					
Macro-fin factor	3 (1;8)	6 (2;12)	2 (0;7)	21 (12;31)	6 (2;14)
Financial factor	5 (1;12)	4 (1;11)	27 (17;38)	2 (0;5)	-
Var-specific factor	13 (5;25)	7 (2;15)	14 (9;20)	3 (0;9)	22 (12;34)
Total	21 (7;45)	17 (5;38)	42 (25;65)	25 (12;46)	28 (13;48)
1984-1999					
Macro-fin factor	2 (0;7)	4 (1;11)	2 (0;7)	18 (9;31)	5 (1;14)
Financial factor	5 (2;11)	5 (2;12)	32 (21;43)	1 (0;3)	-
Var-specific factor	15 (7;26)	8 (3;17)	15 (10;23)	2 (0;7)	28 (16;41)
Total	22 (9;44)	18 (6;40)	49 (31;73)	21 (9;41)	33 (17;55)
2000-2013					
Macro-fin factor	2 (0;8)	4 (1;12)	2 (0;7)	18 (8;31)	5 (1;15)
Financial factor	5 (1;11)	6 (2;13)	34 (23;46)	1 (0;3)	-
Var-specific factor	16 (7;28)	9 (3;20)	16 (10;25)	2 (0;8)	31 (18;45)
Total	22 (8;47)	19 (6;44)	52 (33;78)	20 (8;42)	36 (19;60)

Notes: Shares of fluctuations explained by factors, in percent. Averaged over 17 countries and over the total sample period (or over sub-samples). Medians over 500 retained Gibbs draws, 68% credible sets in brackets.

macro-financial factor becoming less important over time, but the financial factor and the house price factor becoming more important over the two recent sub-samples. For long-term interest rates, we observe a slight decrease in the role of global factors that is also observed for most countries. However, for credit and house prices, the aggregate results mask important heterogeneity across countries regarding the time variation in the role of global co-movement. In the US, UK and the Nordic countries global co-movement becomes more important for credit and house prices over time. This is driven both by the financial factor and the respective variable-specific factor. By contrast, in Continental Europe and in the remaining economies, particularly Japan, the role of global factors stays stable or even declines over time.²³

²³This finding remains robust when we include house price series for Italy, Spain and Portugal into the estimation. Results for this specification are available upon request.

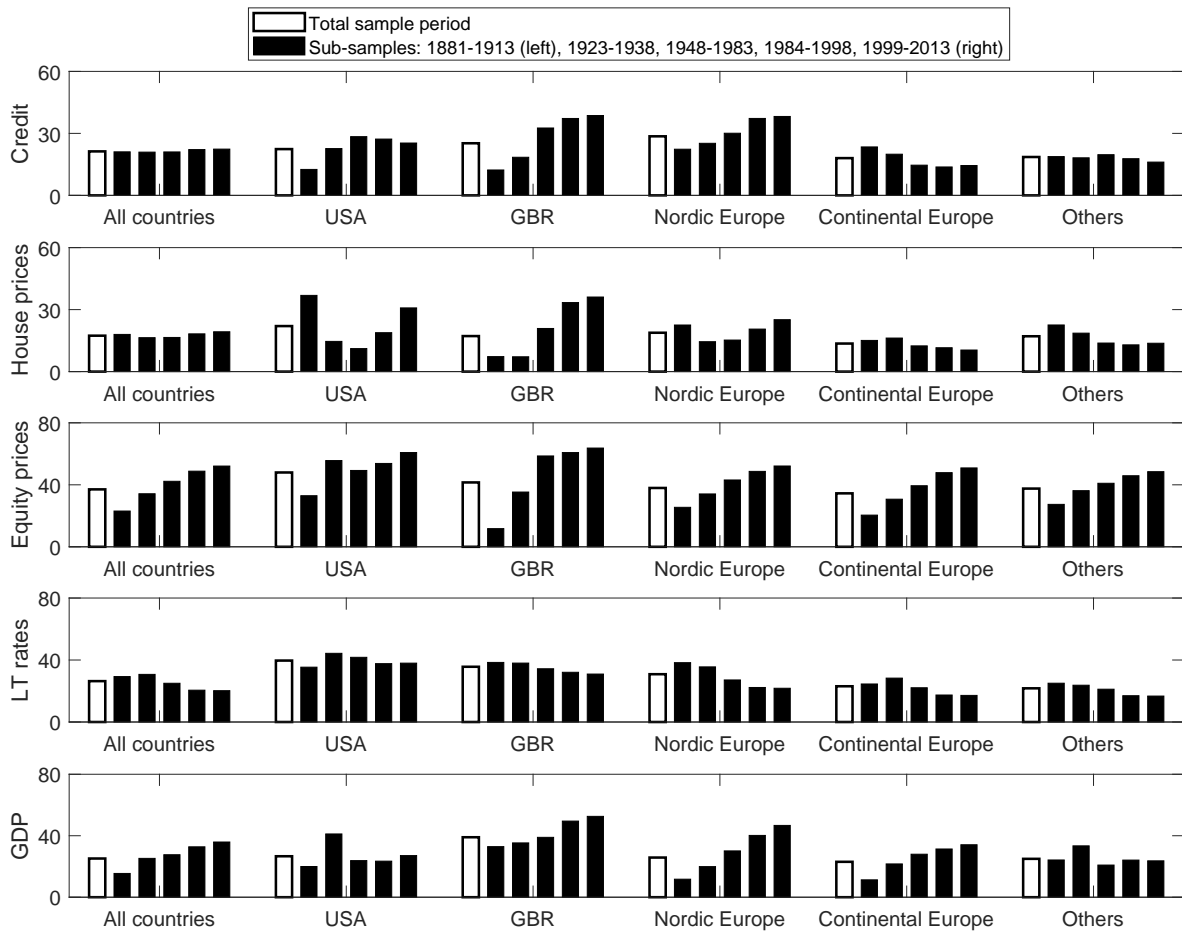


Figure IV.5: Total variance explained by global factors, by countries and country groups. Notes: Share of fluctuations explained by global factors (macro-financial factor, financial factor and respective variable-specific factor), in percent. Medians over 500 retained Gibbs draws. White bars show the explained variance shares averaged over the total sample period, black bars show averages over the sub-samples 1881-1913, 1923-1938, 1948-1983, 1984 to 2013 (from left to right). All countries: average over 17 countries (14 countries for house prices). Nordic Europe: Denmark, Finland, Norway, Sweden. Continental Europe: Belgium, France, Germany, Switzerland, as well as (except for house prices) Italy, Portugal and Spain. Others: Australia, Canada, Japan.

Finally, for GDP, we see a strong increase in the role of global co-movement over time. In the most recent sub-sample, 36 percent of GDP fluctuations are due to global dynamics. The role of GDP-specific global co-movement increased fivefold by the end of the sample period compared to the early era of financial globalization. Back then, the role of the macro-financial factor was more dominant, but only 15 percent of fluctuations in total were due to global dynamics. The increase over time occurred for most countries in the sample, although for the United States and Canada, global dynamics in GDP were most dominant during the inter-war period and remained at stable, lower levels thereafter.

Behind the time-variation in explained variance shares lie the parameters of the model, i.e. the time-varying loadings and the stochastic volatilities which we report in Figures C.8 to C.12 in appendix C. According to our model, the role of global dynamics increased for equity prices in all countries because, on the one hand, the size of global equity price shocks

increased marginally significantly and, on the other hand, the susceptibility of most equity price series to global equity price shocks and global financial shocks rose. Also for GDP, both the size of global GDP shocks and the susceptibility of most countries to these shocks increased over time. For credit and house prices, differences in the time-varying factor loadings drive the cross-country heterogeneity that we observe in the explained variance shares: the loadings to the respective variable-specific factor and to the financial factor increase over time only for some economies (mainly US, UK and some Northern European countries), but stay rather constant or even decrease in others. Finally, according to the model, the decline in the importance of the macro-financial factor for most series stems from a strong decline in the size of macro-financial shocks. This reflects that the macro-financial factor mainly captures the high volatility period during the early era of financial globalization and the Great Depression.²⁴

Overall, we observe that equity prices are strongly and increasingly driven by global co-movement in *all* 17 economies in our sample. Small institutional differences across countries, a high degree of liquidity and fast-moving information on stock markets might make equity return dynamics a truly global phenomenon. On the other hand, regarding credit aggregates and house prices, a country's susceptibility to global forces might depend to a larger degree on institutional characteristics and the interconnectedness of the domestic banking sector. The observed country differences suggest that financial aggregates in more financially open economies are more reactive to global developments.^{25,26} In addition, global linkages across financial aggregates, i.e. linkages between credit, housing and equity markets, seem to have gained relevance for more financially open economies in particular, as indicated by increased loadings to the financial factor. This might imply an increased presence of "leveraged bubbles" across financial sectors on a cross-country scale potentially related to financial deregulation (Jordà et al., 2015b; Iacoviello, 2015; Bengui and Phan, 2018). Accordingly, understanding cross-country heterogeneity can be essential when thinking about the coordination of financial stabilization policies across countries and sectors.

IV.4.4 Sensitivity analysis

In this section, we discuss a number of sensitivity checks to alternative specifications of our model. In particular, we focus on specifications with alternative factor structures and on alternative prior choices regarding the time variation in the parameters.²⁷

²⁴The decline in volatility in the factor with the highest level of aggregation might also reflect changes in the quality of the data. The decline is most steep after World War II, but slows down towards the end of the sample period.

²⁵These important cross-country differences were concealed in earlier studies that relied on averaged bilateral cross-country correlations rather than using a dynamic factor model.

²⁶La Porta et al. (1997) show that the US and the UK are financially highly open economies and Honkapohja (2009) and Jonung (2009) document a large wave of financial deregulation in Northern European countries starting in the 1980s.

²⁷We also conducted additional sensitivity analyses, for which results remained robust and are available upon request. For instance, we experimented with alternative models, where we left out one of the variables at a time (e.g. long-term interest rates, GDP) or, alternatively, added CPI as additional variable. We also

Alternative factor structures

We experiment with alternative factor structures, starting with smaller and simpler models and moving to more complex models, in order to check the sensitivity of our results to the choice of the factor structure, and to evaluate in how far there is a gain from choosing a multi-level factor structure with three levels. We begin with a simple one-level model which allows for a single global financial factor, but no asset-specific factors. Next, we estimate a one-level model with asset-specific financial factors (and, optionally, a GDP factor), but no global financial factor. Then, we move to a two-level model with financial variables that has both a global financial factor and asset-specific factors, but does not include a macro-financial factor. Finally, we experiment with three-level models that additionally include bilateral global factors measuring linkages between two variables at a time, such as a credit-house price factor and a credit-GDP factor. Selected results are shown in Figures C.13 and C.14 in appendix C.

The one-level model with variable-specific cycles provides a credit and house price factor that is robust to the baseline. However, the equity price factor does not capture short cycles as in the baseline, but rather medium frequency cycles that are covered by the financial factor in the baseline. Thus, the multi-level structure helps capturing cycles of different frequencies across the different financial variables. In the two-level model, factors look very similar to the baseline. Furthermore, we find that the shares of fluctuations explained by the factors are larger in the baseline compared to one-level models with one aggregate financial factor or with asset-specific factors only, and also somewhat larger compared to two-level models particularly for house prices. The finding that the role of global cycles increased over the historical time span for equity prices is robust across the different specifications, but the increase is somewhat less pronounced in the one-level model. As in the baseline, for the smaller models, we find less variation over time for the other financial aggregates compared to equity prices. Models that additionally include bilateral factors exhibit time-varying explained variance shares that are similar to the baseline; when adding a credit-house price factor, this factor is significant, but the credit factor and the house price factor turn insignificant.

Sensitivity to Prior Choice

The prior choice regarding the amount of variation in the time-varying parameters can be relevant for the changes over time that we observe. In the baseline, we allow for two types of variation over time: in loadings and in stochastic volatilities. Here, we experiment with shutting down each type of time-variation at a time, or jointly (i.e. imposing fixed

ran the model from 1950 onwards, thus excluding the early era of globalization, the Great Depression and the World Wars altogether. The results look very similar compared to using the whole sample, although a specification without the macro-financial factor makes more sense and yields similar results, given that the macro-financial factor hardly shows any fluctuations after 1950. Hence, the decline in volatility in the factor with the highest level of aggregation might indeed reflect changes in the quality of the data before and after World War II as conjectured above.

parameters). Selected results are shown in Figures C.15 and C.16 in appendix C.

The global factors stay mostly robust across prior choices. One notable exception is the house price factor, where models without variation in stochastic volatility—given that they restrict the size of global house price shocks to stay constant—fail to produce the long, pronounced cycles observed in the baseline since the 1970s. In the fixed parameter model, the house price factor even remains insignificant and close to zero throughout. Also for the GDP factor, the size of many recessions is smaller when restricting stochastic volatilities to be constant. The shares of fluctuations in the data on average across countries remain roughly similar across prior choices, although less changes over time are observed when we shut down one type of time variation, and obviously no changes over time are observed when we shut down both. The result that the role of global cycles increases over time for equity prices, but not for the other financial aggregates, prevails when shutting down one type of time variation. Not surprisingly, however, for the model with fixed loadings, we do not observe differences across country groups regarding the role of global factors for credit and house prices as we did in the baseline. Regarding the different types of global factors, the role of the macro-financial factor remains rather constant at a high level when we do not allow for changes in stochastic volatility.

We also experiment with a wider range of priors, where we allow for different degrees of parameter variation compared to the baseline. Results stay robust when decreasing or increasing the amount of variation in both loadings and stochastic volatilities somewhat. However, allowing for stronger variations in stochastic volatility only, goes at the expense of receiving less time-variant loadings. For prior choices that are substantially more diffuse or allow for considerably larger fluctuations of the parameters, the model has difficulties to distinguish the variation in the loading parameters from the fluctuations in the factors.

IV.5 Conclusion

We have analyzed cyclical co-movement in credit, house prices, equity prices and long-term interest rates across 17 advanced economies based on a multi-level, time-varying parameter dynamic factor model, to which we have brought more than 130 years of data. We provide two main takeaways. First, we find that one financial cycle is not sufficient to explain global co-movement. In fact, both an aggregate financial cycle across financial sectors as well as variable-specific cycles are important to explain global fluctuations. Second, global co-movement explains a significant, but not a predominant share of dynamics of financial aggregates on average across countries. For equity prices the picture is special: global cycles explain more than half of the fluctuations and their role continuously increased over the historical time span that we consider. For the other financial aggregates, the role of global cycles is overall lower and not so new from a historical perspective. In case of credit and house prices this masks pronounced differences across countries: the role of global dynamics increased in the US, the UK and in Nordic economies, but remained constant or declined in

most continental European countries and Japan.

Our results bare important policy implications. Policy makers should carefully monitor both composite indices and individual financial sectors, in order to detect potential instabilities or materializing global crisis risk. The role of global forces is most pronounced for equity markets, but it can amplify in times when global equity price booms coincide with global credit and house price booms, possibly enhanced by financial deregulation. When such dynamics in asset prices and credit occur simultaneously, leverage and therefore risks to financial stability might increase substantially. At the same time, the complex behavior of global financial cycles, with co-movement occurring potentially across different aggregates, at different frequencies and evolving over time, might make it difficult for policy makers to steer cycles directly by (unilateral) policy interventions. Coordinated measures that are independent of the cycle are thus important, such as improvements in the overall transparency and international supervision of global financial linkages, as well as the establishment of safety nets that enhance financial stability. Country characteristics, such as the degree of financial openness, can determine the relevance of financial stabilization policies and the need for coordination of policies across countries and sectors.

The historical perspective combined with a flexible factor model provide a comprehensive picture regarding the extent of different types of global co-movement of financial variables and GDP and changes over time. The analysis also opens avenues for future research. The output from the dynamic factor model, i.e. the estimated factors and the time-varying variance decompositions, can be used in a next step to investigate the historical role of country-characteristics for the susceptibility to global financial dynamics, and to look at the drivers of global cyclical fluctuations such as monetary policy or risk perceptions in center economies. Also an explicit modeling of the role of cross-country capital flows for global co-movement in financial variables deserves attention from a historical perspective. Addressing such questions requires overcoming various challenges related to data availability and identification in a historical context with annual data and potential instability over time, which we leave to future research.

Contribution of co-authors

Maik Wolters had the idea for the research question and for using a dynamic factor model together with the Macrohistory database for the analysis. Galina Potjagailo developed the strategy of using a multi-level factor model with a macro-financial factor, an aggregate financial factor and variable-specific factors. Both co-authors contributed to developing and refining the modeling strategy further. These aspects, as well as open questions and issues along the way were discussed regularly between the two co-authors.

Galina Potjagailo was responsible for preparing the data from the Macrohistory database for the analysis. Moreover, Galina did the econometric analysis in Matlab. She initially implemented a dynamic factor model with time-varying parameters, based on the existing models in the literature. She then extended the model to for a multi-level factor structure.

Both co-authors substantially contributed to the drafting of the manuscript. Galina had a leading role in writing the introduction, data and methodology sections, and Maik had a leading role in writing the results section. But both co-authors contributed to refining all parts of the written manuscript.

Chapter V

Bibliography

Aastveit, K. A., G. J. Natvik, and S. Sola (2013). Economic uncertainty and the effectiveness of monetary policy. *Norges Bank*.

Adrian, T. and H. S. Shin (2010). Financial intermediaries and monetary economics. In B. M. Friedman and M. Woodford (Eds.), *Handbook of Monetary Economics* (1 ed.), Volume 3, Chapter 12, pp. 601–650. Elsevier.

Almunia, M., A. Benetrix, B. Eichengreen, K. H. O'Rourke, and G. Rua (2010). From Great Depression to Great Credit Crisis: similarities, differences and lessons. *Economic Policy* 25(62), 219–265.

Ball, M. (1994). The 1980s property boom. *Environment and Planning A: Economy and Space* 26(5), 671–695.

Banbura, M., D. Giannone, M. Modugno, and L. Reichlin (2013). Now-casting and the real-time data flow. *Handbook of Economic Forecasting* 2(Part A), 195–237.

Barigozzi, M., A. M. Conti, and M. Luciani (2014). Do Euro area countries respond asymmetrically to the common monetary policy? *Oxford Bulletin of Economics and Statistics* 76(5), 693–714.

Bekaert, G., M. Hoerova, and M. L. Duca (2013). Risk, uncertainty and monetary policy. *Journal of Monetary Economics* 60(7), 771–788.

Bekaert, G. and A. Mehl (2019). On the global financial market integration “swoosh” and the trilemma. *Journal of International Money and Finance* 94, 227–245.

Bengui, J. and T. Phan (2018). Asset pledgeability and endogenously leveraged bubbles. *Journal of Economic Theory* 177, 280–314.

Borio, C. (2014). The financial cycle and macroeconomics: What have we learnt? *Journal of Banking & Finance* 45, 182–198.

- Borio, C. E., P. Disyatat, M. Juselius, and P. Rungcharoenkitkul (2018). Monetary policy in the grip of a pincer movement. BIS Working Papers No. 706.
- Breitung, J. and S. Eickmeier (2016). Analyzing international business and financial cycles using multi-level factor models: a comparison of alternative approaches. In *Dynamic Factor Models*, pp. 177–214. Emerald Group Publishing Limited.
- Bruno, V. and H. S. Shin (2015a). Capital flows and the risk-taking channel of monetary policy. *Journal of Monetary Economics* 71, 119–132.
- Bruno, V. and H. S. Shin (2015b). Cross-border banking and global liquidity. *The Review of Economic Studies* 82(2), 535–564.
- Canova, F. (1995). The economics of VAR models. In Hoover, Kevin D. (Ed.), *Macroeconometrics*, pp. 57–106. Springer.
- Canova, F. (2005). The transmission of US shocks to Latin America. *Journal of Applied Econometrics* 20(2), 229–251.
- Carter, C. K. and R. Kohn (1994). On Gibbs sampling for state space models. *Biometrika* 81(3), 541–553.
- Cecchetti, S. G. and P. Tucker (2016, January). Is there macroprudential policy without international cooperation? CEPR Discussion Paper No. 11042.
- Cerutti, E., S. Claessens, and L. Ratnovski (2017). Global liquidity and cross-border bank flows. *Economic Policy* 32(89), 81–125.
- Cerutti, E., S. Claessens, and A. K. Rose (2017). How important is the global financial cycle? evidence from capital flows. *IMF Economic Review*, 1–37.
- Cesa-Bianchi, A., A. Ferrero, and A. Rebucci (2018). International credit supply shocks. *Journal of International Economics* 112, 219–237.
- Christiano, L. J., M. Eichenbaum, and C. L. Evans (1999). Monetary policy shocks: What have we learned and to what end? In J. B. Taylor and M. Woodford (Eds.), *Handbook of Macroeconomics* (1 ed.), Volume 1, Chapter 2, pp. 65–148. Elsevier.
- Claessens, S., M. A. Kose, and M. E. Terrones (2012). How do business and financial cycles interact? *Journal of International Economics* 87(1), 178–190.
- Dahlhaus, T. (2017). Conventional monetary policy transmission during financial crises: An empirical analysis. *Journal of Applied Econometrics* 32(2), 401–421.
- Del Negro, M. and C. Otrok (2008). Dynamic factor models with time-varying parameters: measuring changes in international business cycles. *FEB of New York Staff Report* (326).

- Eickmeier, S., L. Gambacorta, and B. Hofmann (2014). Understanding global liquidity. *European Economic Review* 68, 1–18.
- Eickmeier, S. and B. Hofmann (2013). Monetary policy, housing booms, and financial (im)balances. *Macroeconomic Dynamics* 17(04), 830–860.
- European Central Bank (2018). Real and financial cycles in EU countries: stylised facts and modelling implications. Occasional Paper Series No. 205.
- Filardo, A., M. J. Lombardi, and M. Raczko (2018). Measuring financial cycle time. BIS Working Papers No. 755.
- Georgiadis, G. (2015). Determinants of global spillovers from US monetary policy. *Journal of International Money and Finance*.
- Gopinath, G. (2017). Rethinking international macroeconomic policy. Peterson Institute for International Economics, October.
- Ha, J., M. A. Kose, C. Otrok, and E. S. Prasad (2017). Global macro-financial cycles and spillovers. Paper presented at the 18th Jacques Polak Annual Research Conference, International Monetary Fund, November 2-3, Washington D.C.
- Harding, D. and A. Pagan (2002). Dissecting the cycle: a methodological investigation. *Journal of Monetary Economics* 49(2), 365–381.
- Helbling, T., R. Huidrom, M. A. Kose, and C. Otrok (2011). Do credit shocks matter? A global perspective. *European Economic Review* 55(3), 340–353.
- Hirata, H., M. A. Kose, C. Otrok, and M. E. Terrones (2012). Global house price fluctuations: Synchronization and determinants. NBER Working Paper No. 18362.
- Honkapohja, S. (2009). The 1990s financial crises in Nordic countries. Bank of Finland Research Discussion Papers No. 5.
- Iacoviello, M. (2015). Financial business cycles. *Review of Economic Dynamics* 18(1), 140–163.
- International Monetary Fund (2017). Are countries losing control of domestic financial conditions? *Global Financial Stability Report. Getting the Policy Mix Right*. April 2017, Chapter 3.
- Jonung, L. (2009). Lessons from the Nordic financial crisis. In J. K. Jonung, Lars and P. Vartiainen (Eds.), *The Great Financial Crisis in Finland and Sweden. The Nordic Experience of Financial Liberalization*, Chapter 10, pp. 301–324. Edward Elgar Publishing.
- Jordà, Ò., M. Schularick, and A. M. Taylor (2015a). Betting the house. *Journal of International Economics* 96, S2–S18.

- Jordà, Ò., M. Schularick, and A. M. Taylor (2015b). Leveraged bubbles. *Journal of Monetary Economics* 76, S1–S20.
- Jordà, Ò., M. Schularick, and A. M. Taylor (2017). Macrofinancial history and the new business cycle facts. In M. Eichenbaum and J. A. Parker (Eds.), *NBER Macroeconomics Annual 2016*, Volume 31, pp. 213–263. University of Chicago Press.
- Jordà, Ò., M. Schularick, A. M. Taylor, and F. Ward (2019). Global financial cycles and risk premiums. *IMF Economic Review* 67(1), 109–150.
- Kalemli-Ozcan, S., E. Papaioannou, and F. Perri (2013). Global banks and crisis transmission. *Journal of International Economics* 89(2), 495–510.
- Kim, S., N. Shephard, and S. Chib (1998). Stochastic volatility: likelihood inference and comparison with ARCH models. *The Review of Economic Studies* 65(3), 361–393.
- Knoll, K., M. Schularick, and T. M. Steger (2017). No price like home: Global house prices, 1870–2012. *The American Economic Review* 107(2), 331–353.
- Kollmann, R., Z. Enders, and G. J. Müller (2011). Global banking and international business cycles. *European Economic Review* 55(3), 407–426.
- Kose, M. A., C. Otrok, and E. Prasad (2012). Global business cycles: convergence or decoupling? *International Economic Review* 53(2), 511–538.
- Kose, M. A., C. Otrok, and C. H. Whiteman (2003). International business cycles: world, region, and country-specific factors. *The American Economic Review* 93(4), 1216–1239.
- La Porta, R., F. Lopez-De-Silanes, A. Shleifer, and R. W. Vishny (1997). Legal determinants of external finance. *Journal of Finance* 52(3), 1131–1150.
- Lang, J. H. and P. Welz (2018). Semi-structural credit gap estimation. ECB Working Paper No. 2194.
- Meller, B. and N. Metiu (2017). The synchronization of credit cycles. *Journal of Banking & Finance* 82, 98–111.
- Menden, C. and C. R. Prōano (2017). Dissecting the financial cycle with dynamic factor models. *Quantitative Finance* 17(12), 1965–1994.
- Miranda-Agrippino, S. and H. Rey (2015). World asset markets and the global financial cycle. NBER Working Paper No. 21722.
- Miranda-Agrippino, S. and H. Rey (2019). US monetary policy and the global financial cycle.
- Obstfeld, M. (2015). Trilemmas and trade-offs: living with financial globalisation. BIS Working Paper No. 480.

- Peersman, G. (2004). The transmission of monetary policy in the euro area: are the effects different across countries? *Oxford Bulletin of Economics and Statistics* 66(3), 285–308.
- Quah, D. and T. J. Sargent (1993). A dynamic index model for large cross sections. In *Business cycles, indicators and forecasting*, pp. 285–310. University of Chicago Press.
- Rajan, R. G. (2015). Competitive monetary easing: Is it yesterday once more? *Macroeconomics and Finance in Emerging Market Economies* 8(1-2), 5–16.
- Reinhart, C. M., V. Reinhart, and C. Trebesch (2016). Global cycles: Capital flows, commodities, and sovereign defaults, 1815–2015. *The American Economic Review* 106(5), 574–580.
- Rey, H. (2015). Dilemma not trilemma: the global financial cycle and monetary policy independence. NBER Working Paper No. 21162.
- Ritschl, A., S. Sarferaz, and M. Uebele (2016). The US business cycle, 1867–2006: A dynamic factor approach. *Review of Economics and Statistics* 98(1), 159–172.
- Rünstler, G. and M. Vlekke (2018). Business, housing, and credit cycles. *Journal of Applied Econometrics* 33(2), 212–226.
- Schularick, M. and A. M. Taylor (2012). Credit booms gone bust: monetary policy, leverage cycles, and financial crises, 1870–2008. *The American Economic Review* 102(2), 1029–1061.
- Stock, J. H. and M. W. Watson (2005). Implications of dynamic factor models for VAR analysis. NBER Working Paper No. 11467.
- Stock, J. H. and M. W. Watson (2012). Disentangling the channels of the 2007-2009 recession. NBER Working Paper No. 18094.
- Strohsal, T., C. R. Pröano, and J. Wolters (2019). Characterizing the financial cycle: Evidence from a frequency domain analysis. *Journal of Banking & Finance* (forthcoming).
- Verona, F. (2016). Time–frequency characterization of the US financial cycle. *Economics Letters* 144, 75–79.

Appendix A

Additional Tables and Figures

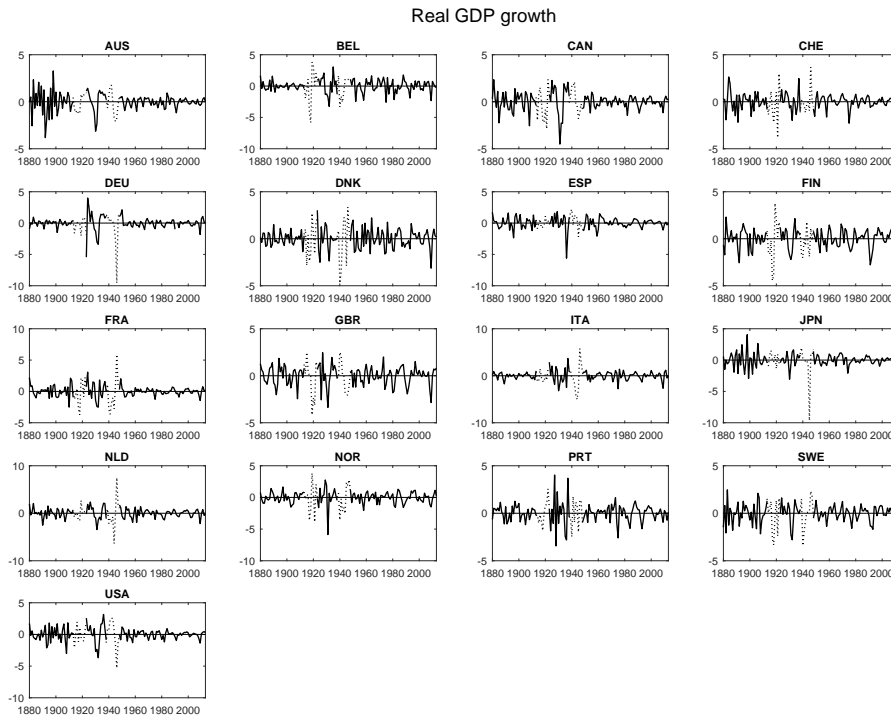


Figure C.1: Log real GDP growth.

Notes: Log differenced time series. Growth rates were detrended via a centered moving average of ± 8 years and then standardized. Dotted parts show years around World Wars (1914 to 1922, 1939 to 1947) that were not used in the estimation.

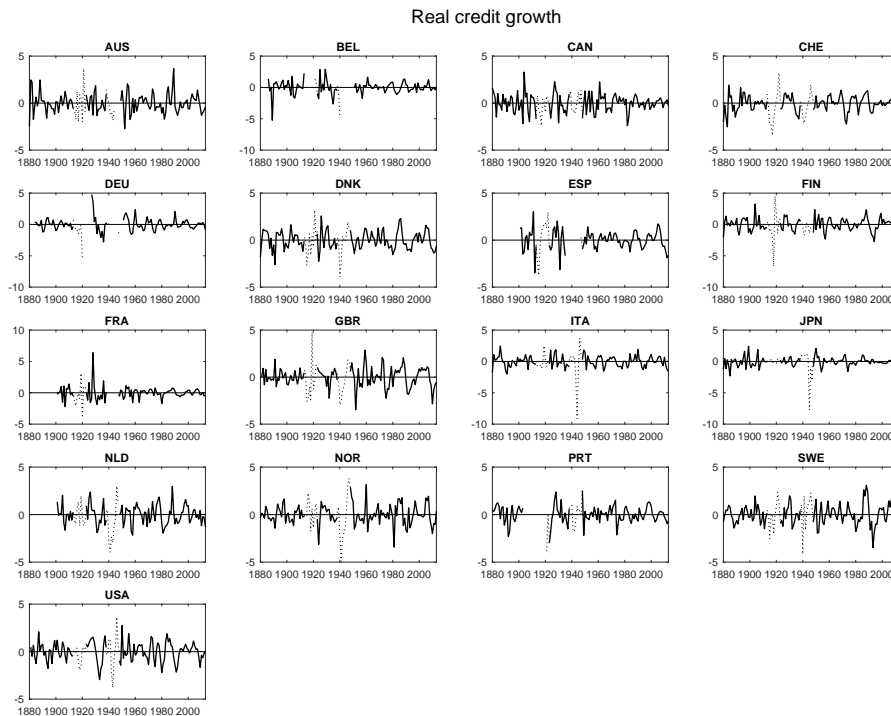


Figure C.2: Log real credit growth.

Notes: Log differenced time series. Growth rates were detrended via a centered moving average of ± 8 years and then standardized. Dotted parts show years around World Wars (1914 to 1922, 1939 to 1947) that were not used in the estimation. Empty parts indicate missing values.

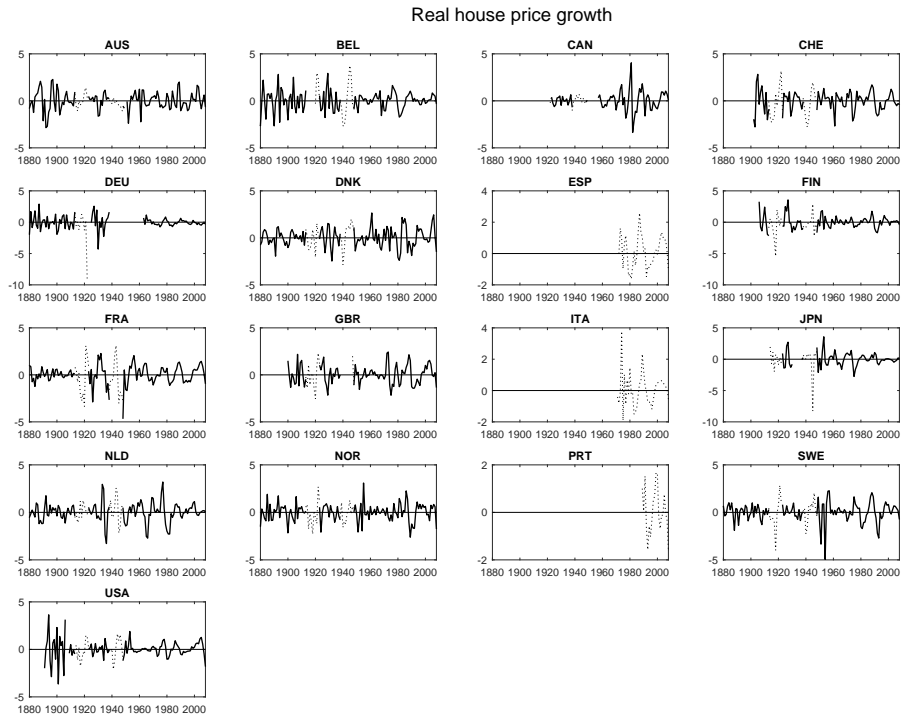


Figure C.3: Log real house price growth.

Notes: Growth rates were detrended via a centered moving average of ± 8 years and then standardized. Dotted parts show data not used in the estimation: house prices for Spain, Italy and Portugal are not included due to the short available time series. Also see notes of Figure C.2.

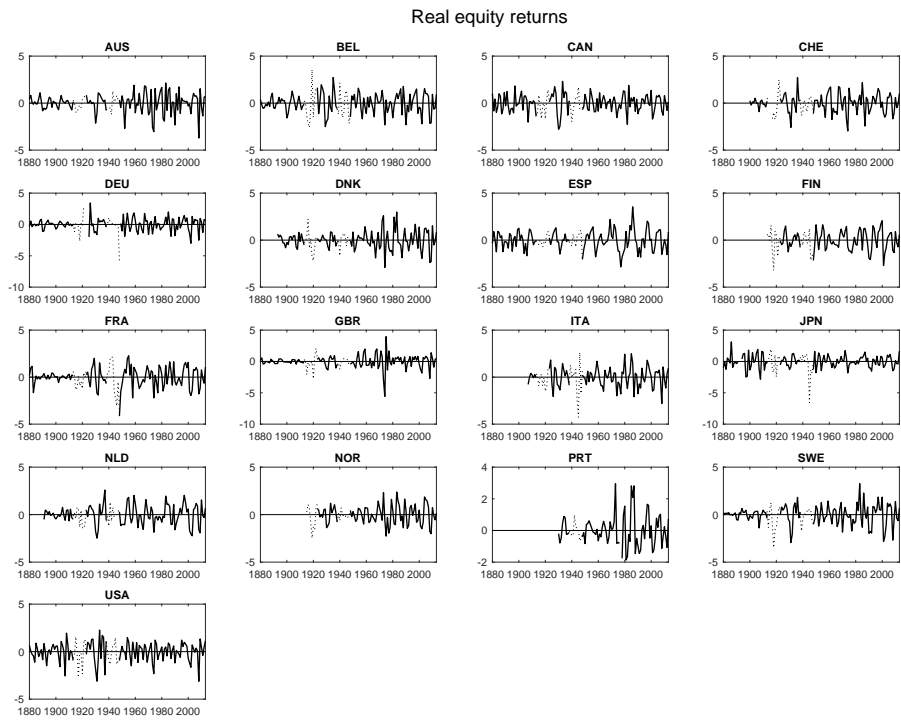


Figure C.4: Log real equity returns.

Notes: Growth rates were detrended via a centered moving average of ± 8 years and then standardized. Also see notes of Fig.C.2.

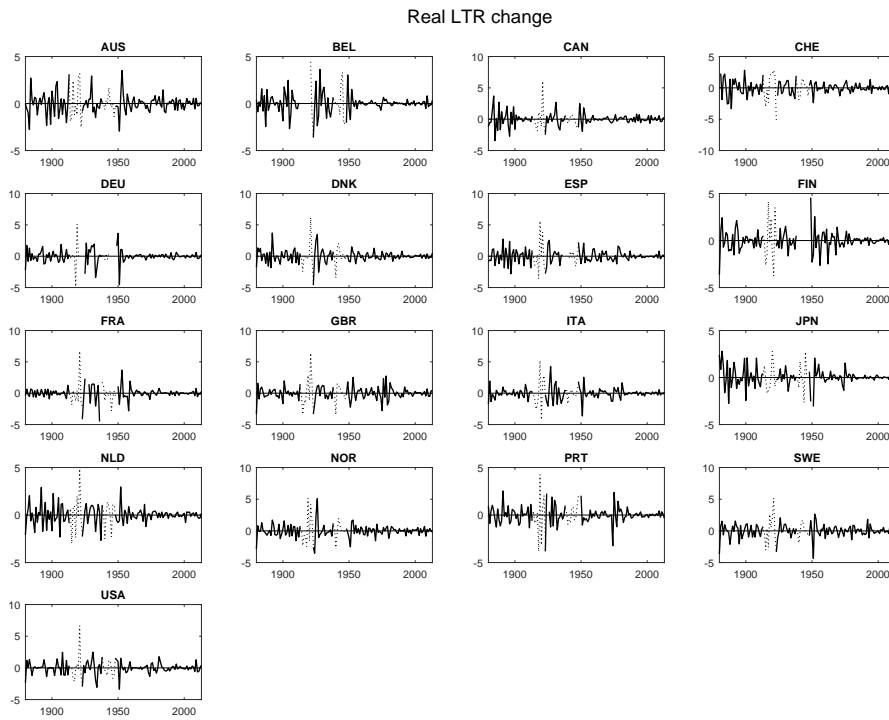


Figure C.5: Differenced real long term interest rates.

Notes: Differenced time series were detrended via a centered moving average of ± 8 years and then standardized. Also see notes of Fig.C.2.

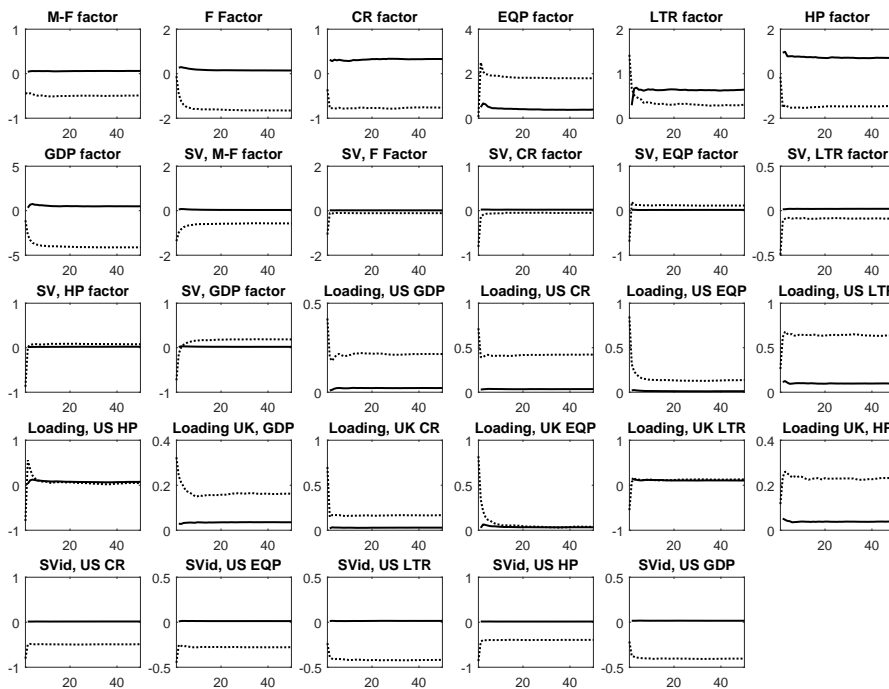


Figure C.6: Recursive means and variances of Gibbs sampler draws, selected state variables.

Notes: Dotted lines show recursive means and solid lines show recursive variances of draws, calculated after every 400th draw (i.e. every 8th draw is retained and every 50th time recursive moments are calculated), for the respective state variables at $t=2010$.

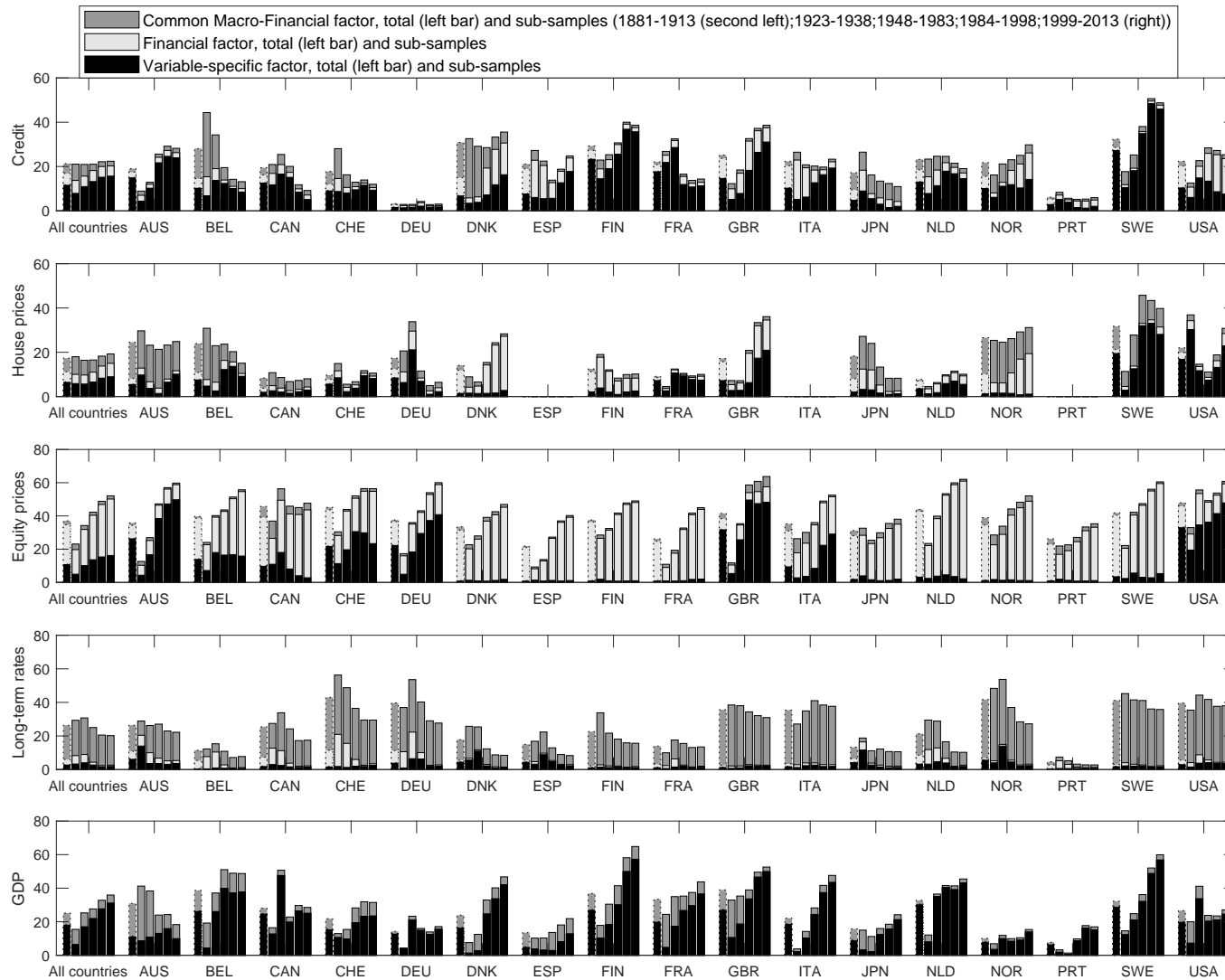


Figure C.7: Total variance explained by global factors, by countries and factor type.

Notes: Share of fluctuations explained by global factors (macro-financial factor in dark gray, financial factor in light gray, and respective variable-specific factor in black), in percent. Medians over 500 retained Gibbs draws. Bars at the very left show the explained variance shares averaged over the total sample period, remaining bars show averages over the sub-samples 1881-1913, 1923-1938, 1948-1983, 1984 to 2013 (from second left to right). All countries: average over 17 countries (14 countries for house prices).

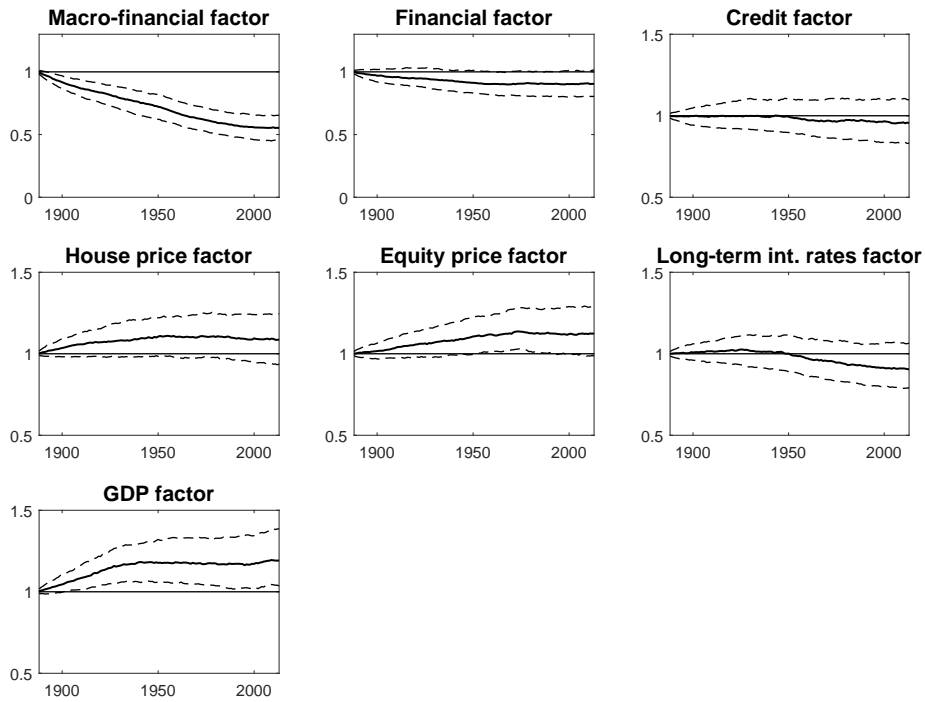


Figure C.8: Stochastic volatilities of global factors.

Notes: Solid lines show the posterior median, dashed lines show the 68 percent credible sets.

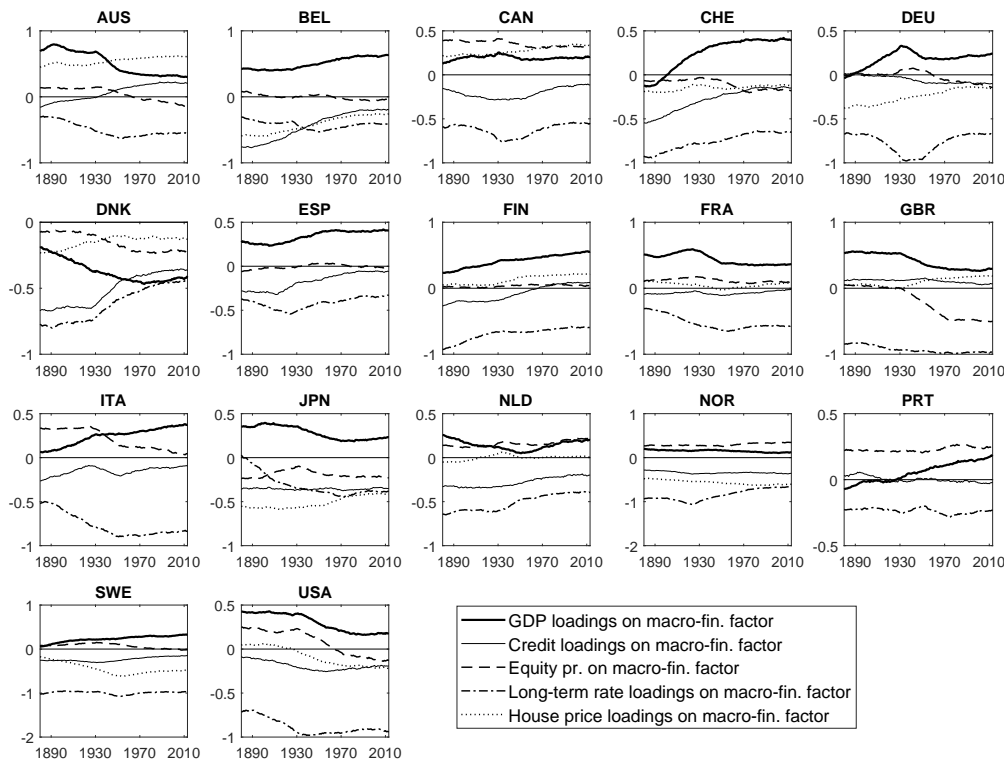


Figure C.9: Factor loadings on macro-financial factor.

Notes: Estimated with the hierarchical TVP DFM. Credibility sets not presented for readability.

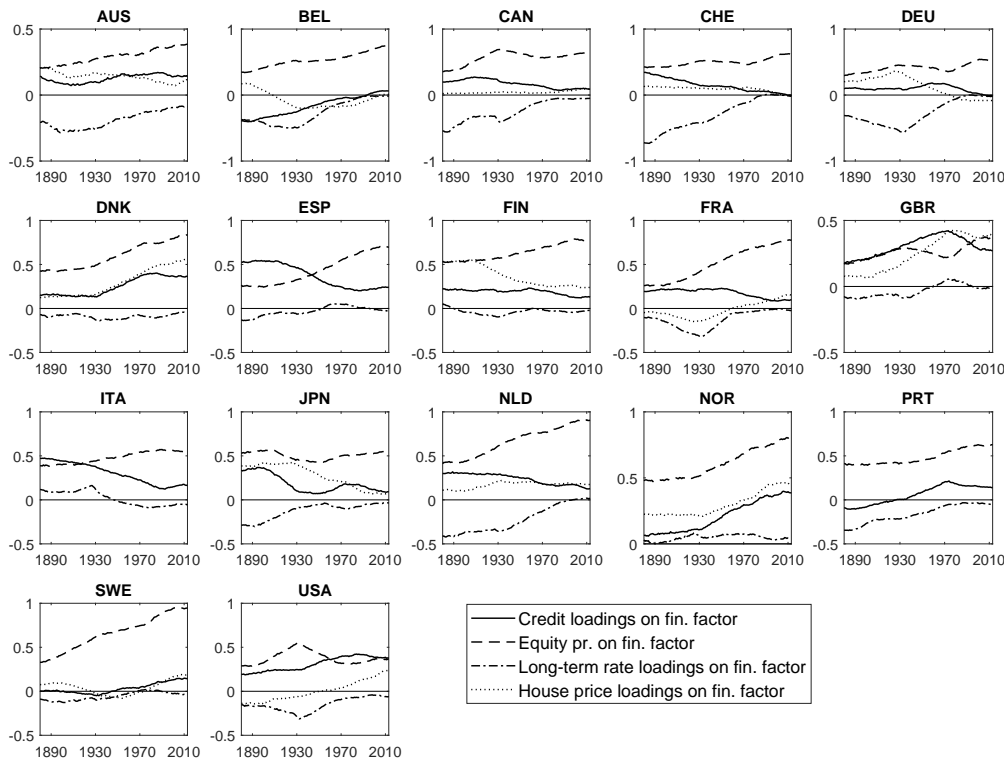


Figure C.10: Factor loadings on financial factor.

Notes: Estimated with the hierarchical TVP DFM. Credibility sets not presented for readability.

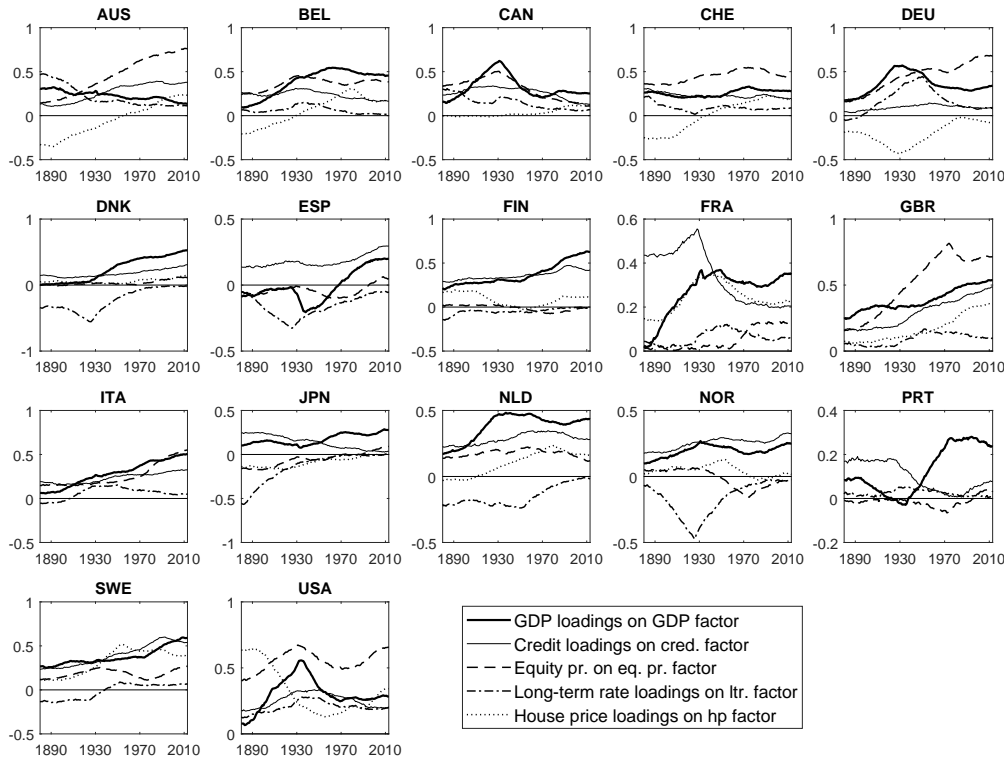


Figure C.11: Factor loadings on variable-specific factors.

Notes: Estimated with the hierarchical TVP DFM. Credibility sets not presented for readability.

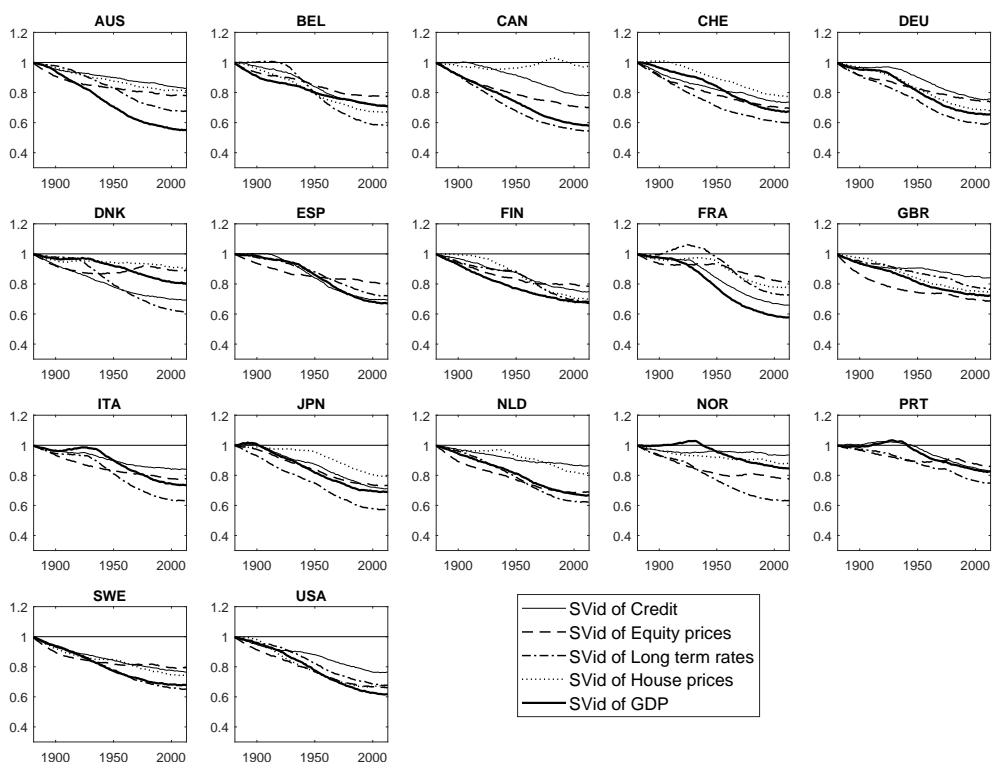


Figure C.12: Idiosyncratic stochastic volatilities.

Notes: Estimated with the hierarchical TVP DFM. Credibility sets not presented for readability.

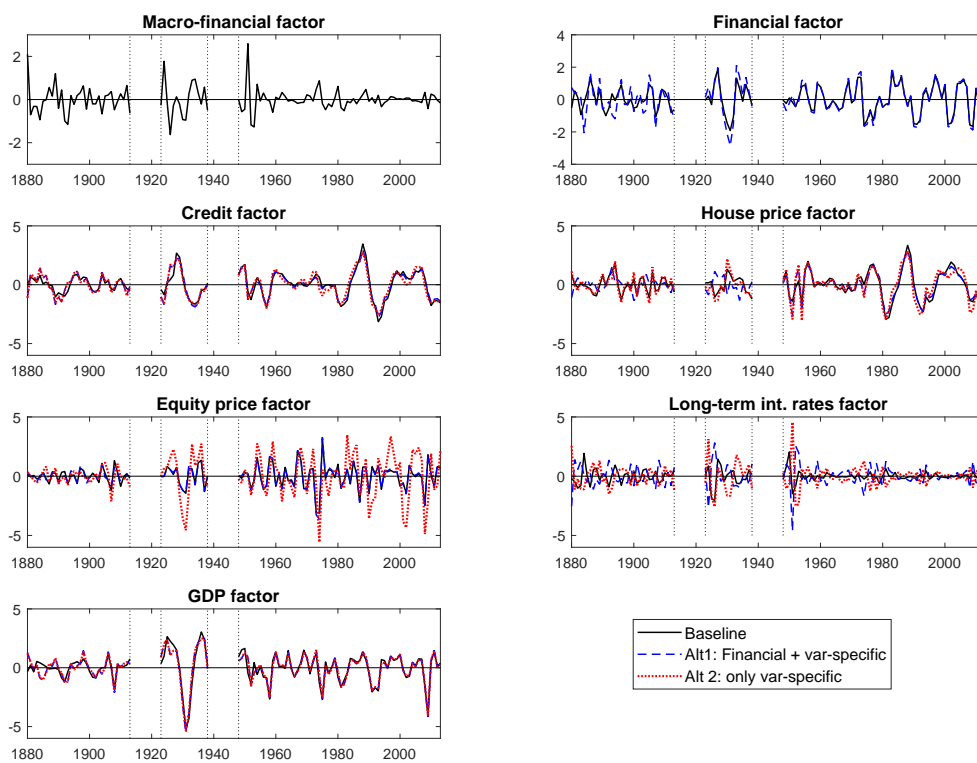


Figure C.13: Global factors, sensitivity to alternative factor structures.

Notes: Common factors, medians over 500 retained Gibb draws. Baseline: Baseline, 3-level model with macro-financial factor, financial factor and variable-specific factors. Alt1: 2-level model with financial factor and variable-specific factors. Alt2: 1-level model with variable-specific factors.

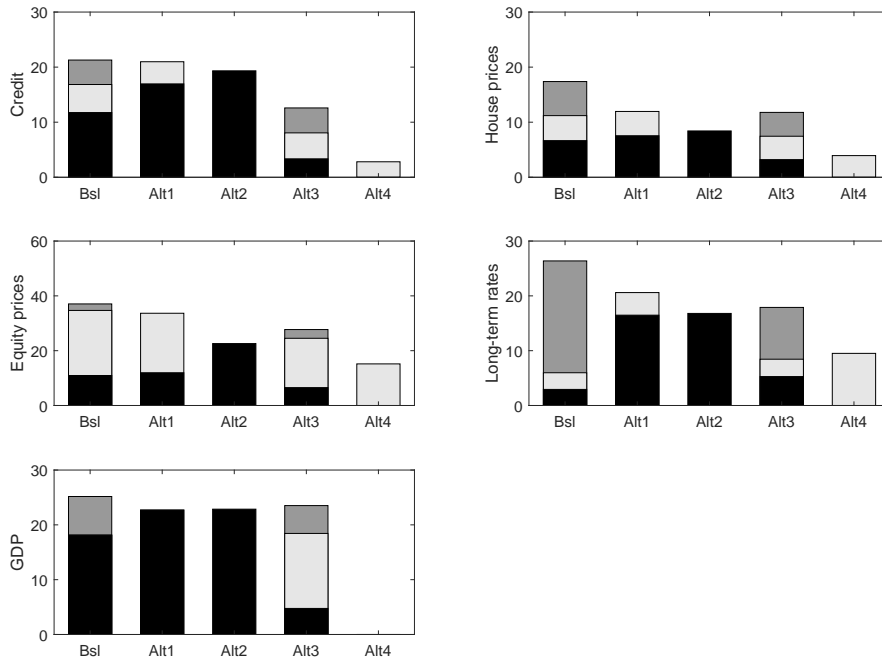


Figure C.14: Explained variance shares, sensitivity to alternative factor structures.
 Notes: Shares of variances explained by common factors, averaged over time and countries, medians over 500 retained Gibb draws. Bsl: Baseline, 3-level model with macro-financial factor (dark gray), financial factor (light gray) and variable-specific factors (black). Alt1: 2-level model with financial factor (light gray) and variable-specific factors (black). Alt2: Model with variable-specific factors. Alt3: Model with 3 common factors, no factor structure imposed (all variables load on all factors). Alt4: Model with 1 financial factor (all financial variables load).

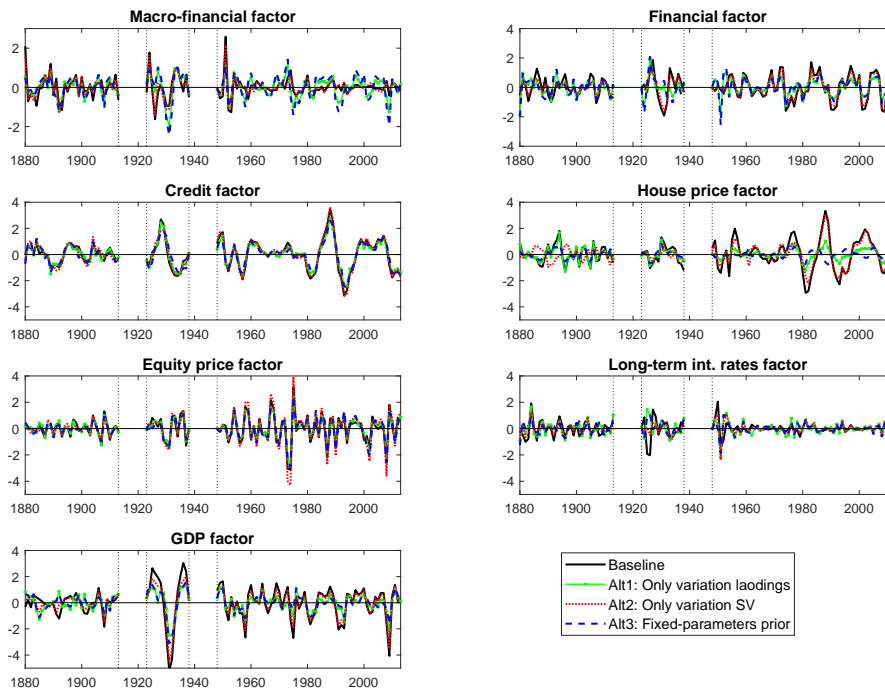


Figure C.15: Global factors, sensitivity to alternative prior choices.
 Notes: Common factors, medians over 500 retained Gibb draws. Baseline: Model with time-variation in loadings and stochastic volatilities. Alt1: Time-variation in loadings only. Alt2: Time-variation in stochastic volatilities only. Alt3: No time-variation (fixed parameters).

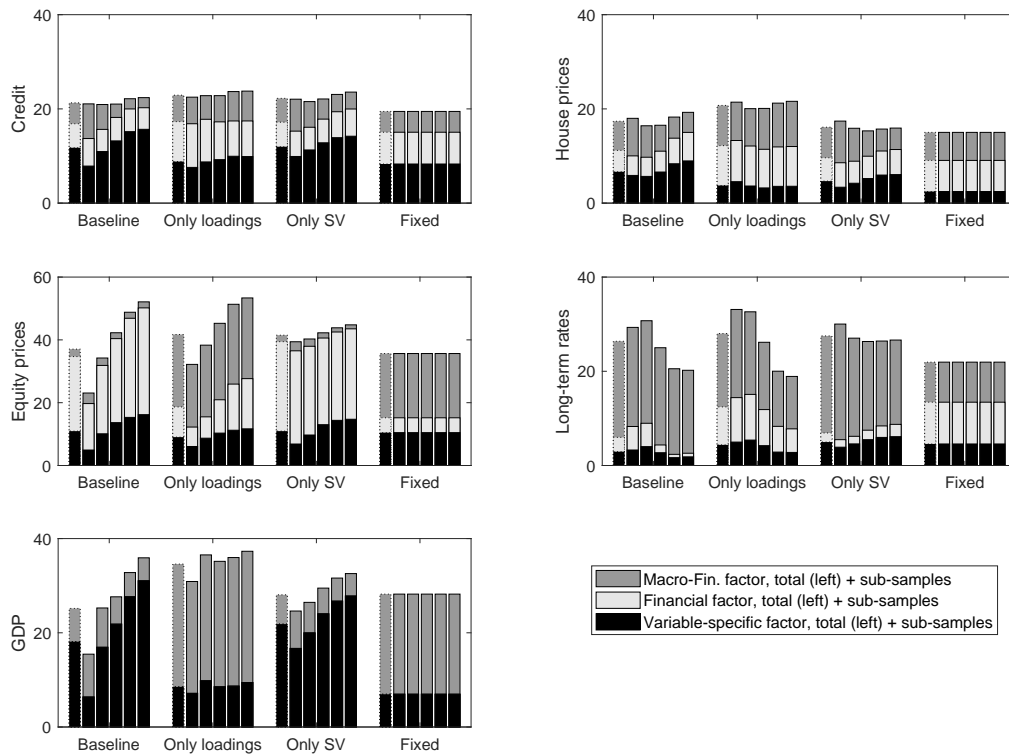


Figure C.16: Explained variance shares, sensitivity to alternative factor structures.
 Notes: Shares of variances explained by common factors, averaged over countries, medians over 500 retained Gibb draws. Total sample period (left bar) and sub-samples: 1880-1913 (2nd left bar), 1923-1938, 1948-1983, 1984-1998, 1999-2013 (right bar). Baseline: Model with time-variation in loadings and stochastic volatilities. Alt1: Time-variation in loadings only. Alt2: Time-variation in stochastic volatilities only. Alt3: No time-variation (fixed parameters).

Acknowledgements

First of all, I would like to express my sincere gratitude and appreciation to my supervisor and co-author Maik Wolters. His support, advice and guidance related to both research and professional matters as well as the trust he placed in me throughout my PhD studies were extremely valuable and helpful. Also, Maik's contributions to our joint papers were of highest quality and his friendly personality and collegiality made it a pleasure working with him.

Moreover, my sincere gratitude goes to my second supervisor Kai Carstensen who provided extremely valuable feedback for my research during seminar presentations, and whose strong support was essential in my job market process.

Further, a sincere thank you goes to my colleagues of the Kiel Institute for the World Economy, who were a pleasure to work with, and from whom I learned a lot by discussing research and current policy issues, as well as by working together in a team. I would like to express my sincere gratitude to Stefan Kooths, who entrusted me with much responsibility in policy work—where I acquired extremely valuable knowledge and skills—while making sure that I had time for my research. Also, I highly appreciate Wolfgang Lechthaler for supporting my research and for providing me great possibilities for conference and summer school participations. I am very thankful to both Stefan and Wolfgang for their support in my job market process. Finally, I am very grateful to my colleague and co-author Nils Jannsen for his highly valuable contribution in our joint research and policy work, as well as for teaching me a lot and supporting me in my position at the Kiel Institute.

I am also highly grateful for financial and personal support from the Friedrich-Ebert Foundation during my undergraduate studies and during one year of PhD studies, as well as for financial support for the first two years of my PhD studies through a scholarship of the Landesstipendium Schleswig-Holstein.

Finally, I am sincerely grateful to my close family and friends who have held my back during my undergraduate and PhD studies and who always motivated me to continue by believing in my success.