

Pathogenicity of the root lesion nematode *Pratylenchus neglectus* depends on pre-culture conditions

Ehsan Fatemi¹ and Christian Jung^{1*}

¹Plant Breeding Institute, Christian-Albrechts University Kiel, Germany

*Corresponding author email: c.jung@plantbreeding.uni-kiel.de

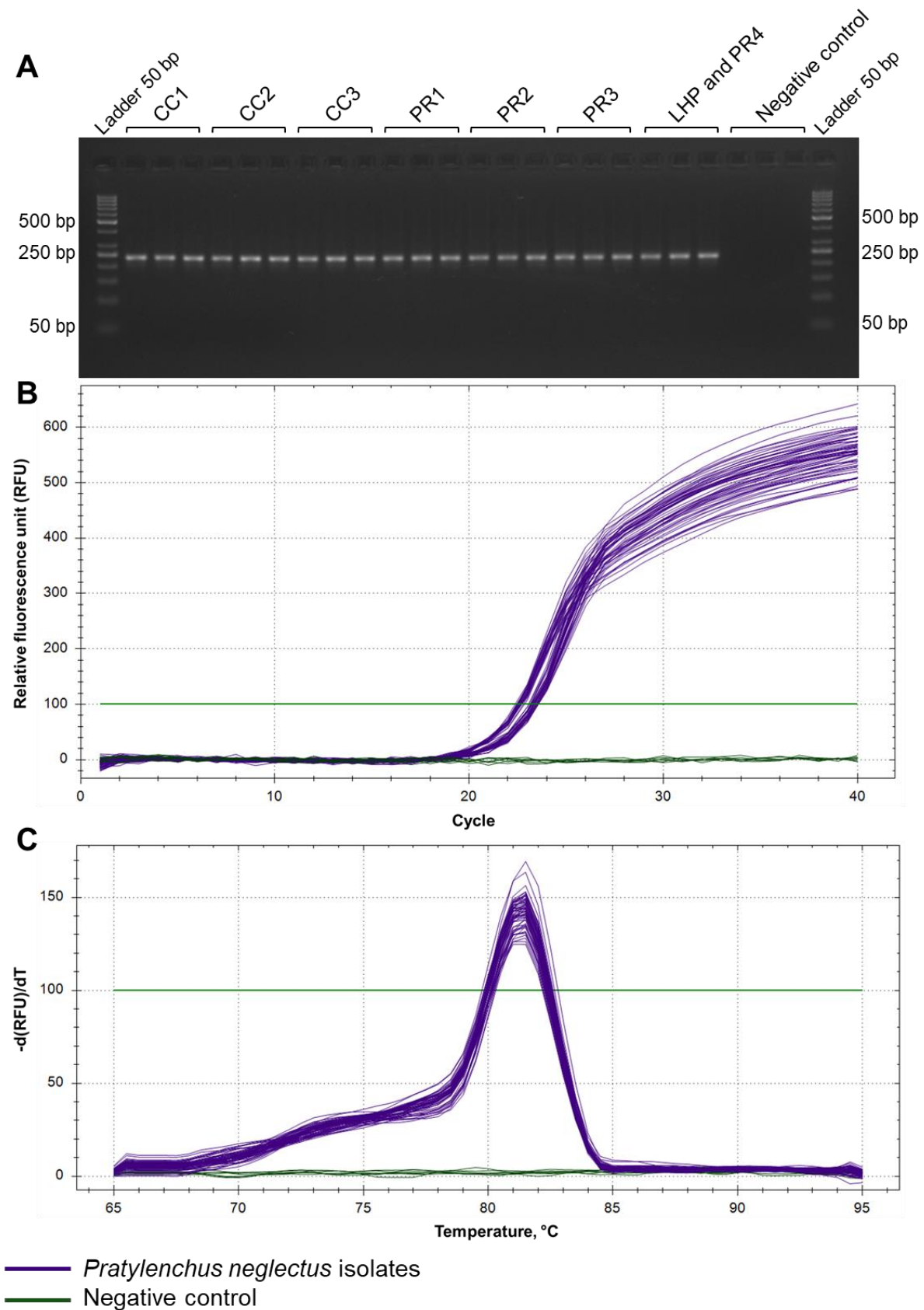
Supplementary data

Supplementary tables

| Nr. | Name | Composition | 1 liter | 10 Liter | 100 Liter | Company |
|---|--|--|---------|----------|-----------|---------|
| 1 | Calcium nitrate tetrahydrate ≥98% pure | Ca(NO ₃) ₂ ·4H ₂ O | 1.41 | 14.05 | 140.15 | Roth |
| 2 | Ammonium nitrate ≥98% p.a ACS | NH ₄ NO ₃ | 0.17 | 1.65 | 16.50 | Roth |
| 3 | Dipotassium phosphate ≥98% Anhydrous | K ₂ HPO ₄ | 0.22 | 2.23 | 22.25 | Roth |
| 4 | Potassium sulfate, ≥98 % Cryst. | K ₂ SO ₄ | 1.50 | 15.00 | 150.00 | Roth |
| 5 | Magnesium sulphate heptahydrate, ≥99 %, p.a., ACS | MgSO ₄ ·7H ₂ O | 0.96 | 9.60 | 96.00 | Roth |
| 6 | Ethylenediamine tetraacetic acid iron(III) sodium salt-Trihydrate, ≥98 %, for synthesis | FeNaEDTA | 0.0745 | 0.7450 | 7.4496 | Roth |
| 7 | Manganese(II) sulphate monohydrate, ≥99 %, p.a., ACS | MnSO ₄ ·H ₂ O | 0.0129 | 0.1286 | 1.2864 | Merck |
| 8 | Boric acid ≥99.8 %, p.a. ACS ISO | H ₃ BO ₃ | 0.0057 | 0.0566 | 0.5664 | Roth |
| 9 | Copper (II) - sulfate-pentahydrate, for analysis. ACS ISO | CuSO ₄ ·5H ₂ O | 0.0012 | 0.0125 | 0.1248 | Merck |
| 10 | Zinc sulfate heptahydrate, for analysis, analysis | ZnSO ₄ ·7H ₂ O | 0.0012 | 0.0125 | 0.1248 | Merck |
| 11 | Sodium molybdate- Dihydrate | Na ₂ MoO ₄ ·2H ₂ O | 0.0005 | 0.0048 | 0.0480 | Merck |
| Tap water (Liter) | | | 1 | 10 | 100 | |
| Adjust the pH value with sulfuric acid 98% (Approx. 8ml) | | | pH | 6 | 6 | 6 |

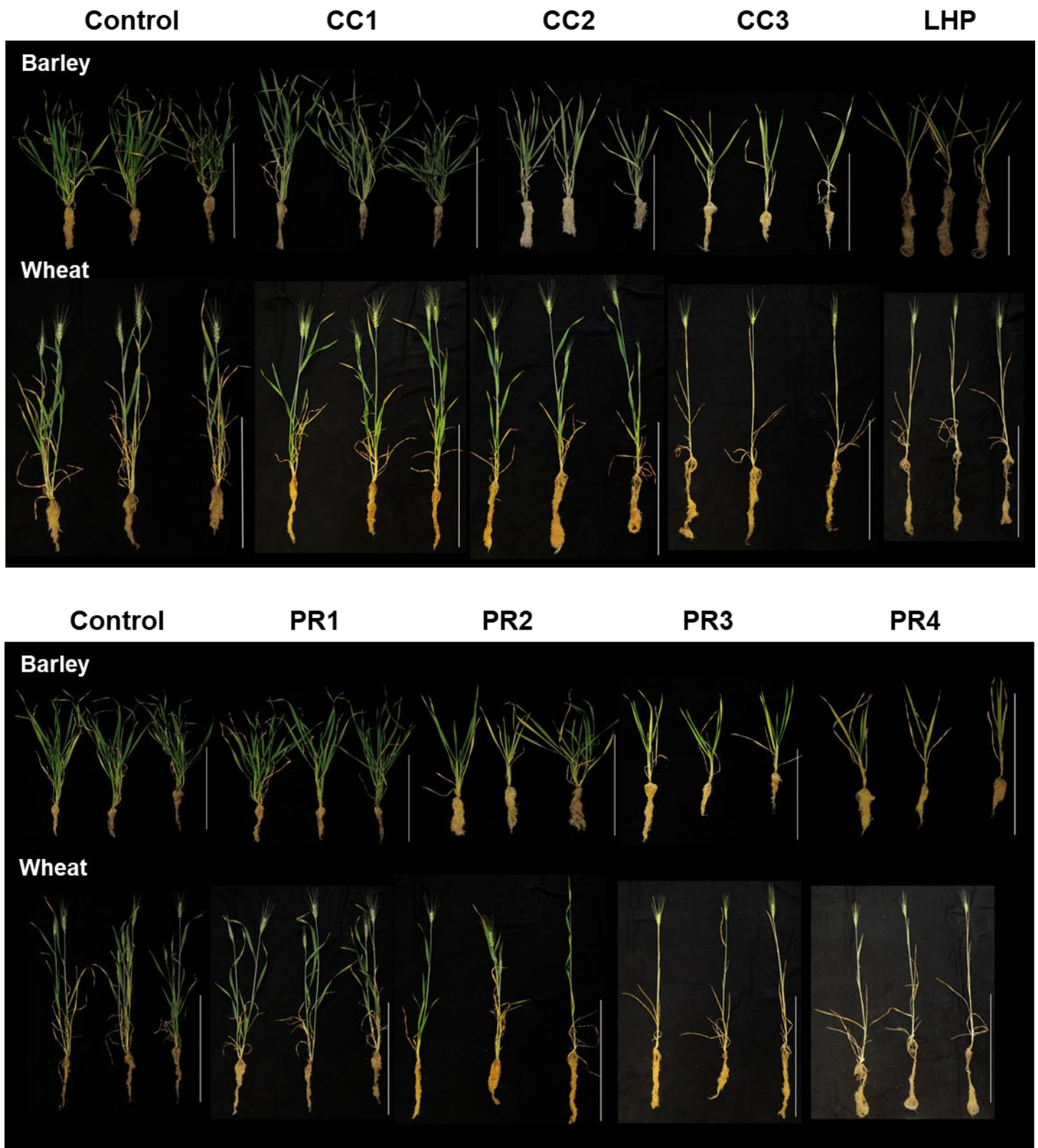
Supplementary Table 1: The nutrient supplies were used to support cereal plant development as described by Marshall and Ellis 1998.

Supplementary figures



Supplementary Figure 1: PCR and RT-qPCR results with total DNA of cereal plants inoculated with different *P. neglectus* isolates. The primer combination Neg1 was used (Fatemi et al. 2023). (A) Agarose gel electrophoresis (3%, 80V for 60 minutes) with PCR fragments amplified with DNA from different isolates. (B) RT-qPCR amplification curves for seven *P. neglectus* isolates. (C) The melting curve peak of the *P. neglectus*-specific amplicons is at 81.5°C. All samples were analyzed using three technical replicates.

Supplementary figures



Supplementary Figure 2: Barley and wheat plants from the greenhouse experiment eight weeks after inoculation. Roots were harvested ten weeks after sowing. Plants were infected with 1000 nematodes from different *P. neglectus* isolates. Scale bar: 30 cm.